

MONTANA

BORN & RAISED

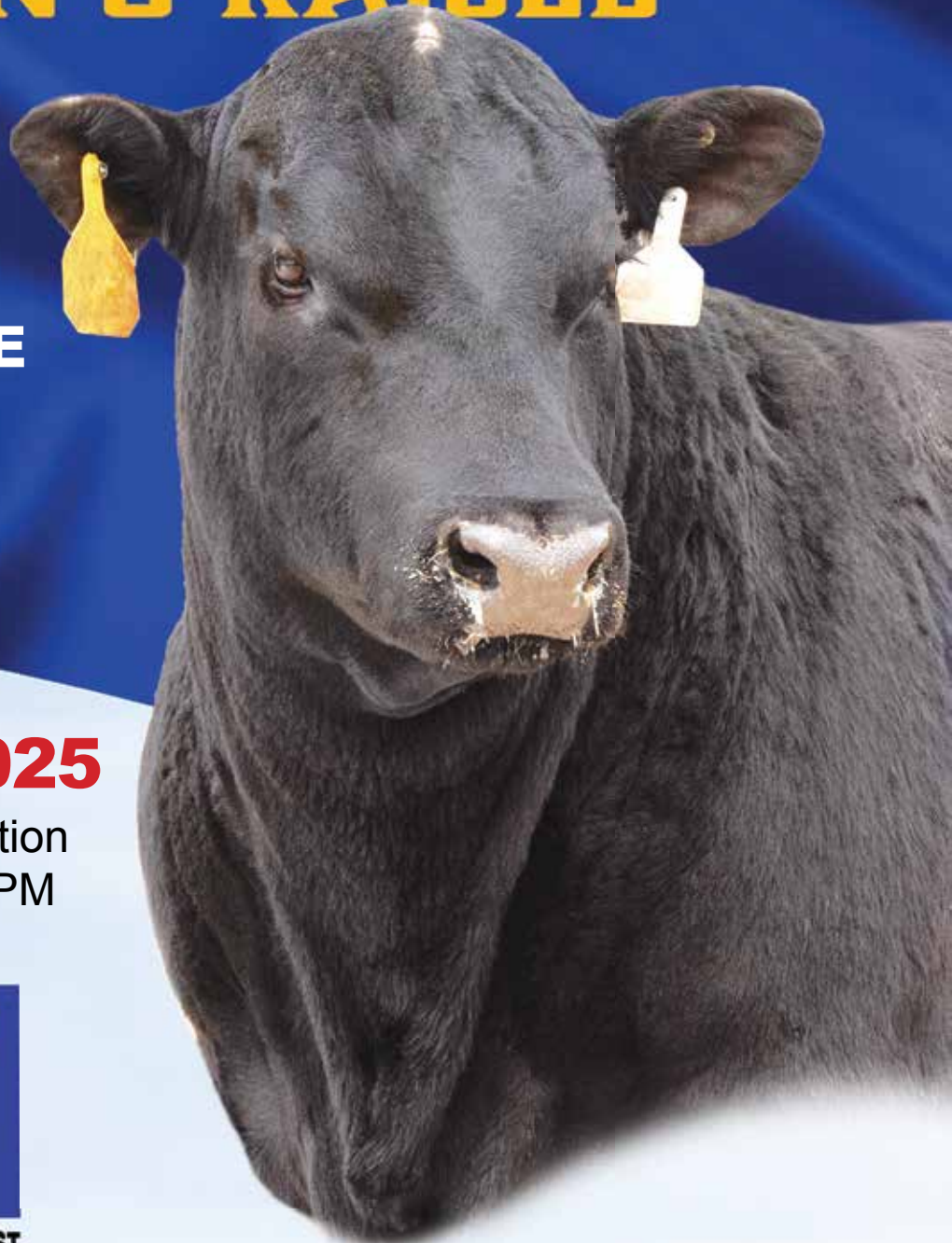
The Cowboy's and Cowgirl's

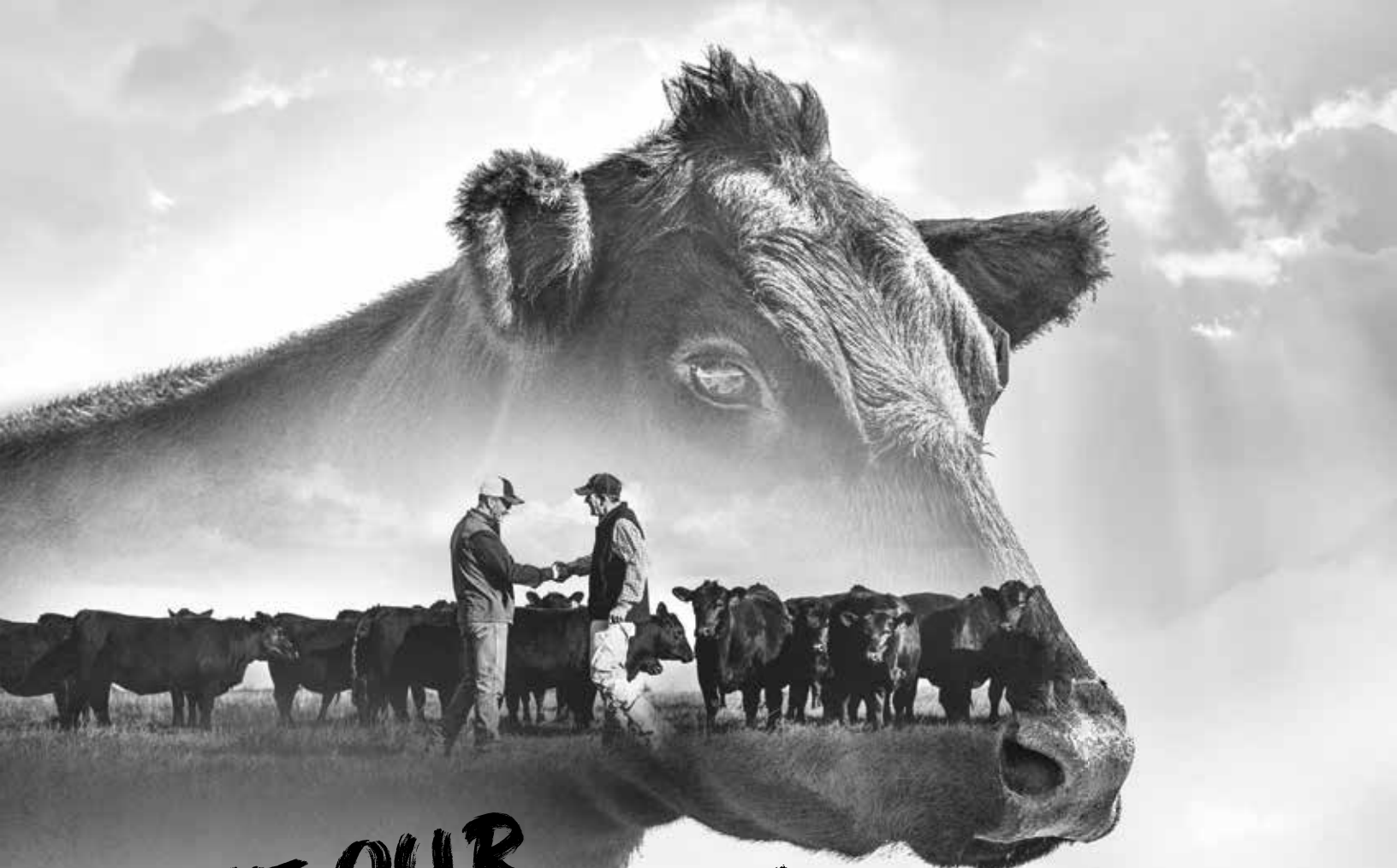
PERFORMANCE BULL TEST

SALE DATE:

APRIL 15, 2025

Western Livestock Auction
Great Falls, MT | 1:00 PM





TAKE OUR
WORK
FOR IT.

Protect your investment with decades of research, support and proven products.

Bovine Respiratory Disease (BRD) is a challenge all producers face, but you don't need to face it alone. Merck Animal Health is by your side with over 25 veterinarians and a research facility in the heart of cattle country supporting our local teams of cattle experts. We work hard to deliver the industry's most comprehensive BRD portfolio, now including AROVYN™ (tulathromycin injection). Merck Animal Health ensures you have the right solution for your cattle's health and your bottom line too.

You stand behind them, we stand behind you.
Learn more at The-BRD-Experts.com.

IMPORTANT SAFETY INFORMATION: AROVYN has a pre-slaughter withdrawal time of 18 days in cattle. Do not use in female dairy cattle 20 months of age or older. Do not use in animals known to be hypersensitive to the product. See Full Prescribing Information.

Introducing

AROYN
(tulathromycin injection)
Injectable Solution
Antibiotic



Ryan & Karnell Perry
406/788-9869 406/390-5473



On behalf of my wife and myself, along with all the consignors and their respective families, I would like to welcome you to the Annual Treasure Bull Test Sale. We thank you for your continued support and interest in the program and sale.

This is the best set of bulls from top to bottom that Treasure Bull Test has ever offered for sale. The depth of quality from Breed Leading Sires will be unmatched anywhere. From phenotype to genotype to real world performance the bulls have the ability to enhance any program.

This is ***The Cowboy's and Cowgirl's Performance Bull Test.***

Please feel free and I strongly suggest calling the consignors on their consignments. They are all excited about their bulls and I know they would love to visit and provide any more information you might need. This is a deep offering of calving ease, performance tested Black Angus Bulls that the consignors are extremely proud of!

Finally, I would like to thank Matt, Rose and the entire family and crew at Muddy Creek Feedyard. They did an outstanding job with the bulls this year. We feel they are in perfect condition to go on with for immediate service. Dr Craig Moore with East Slope Vet Clinic for everything they do for us at the feedyards and yards.

The sale will be carried live on Northern Livestock Video Auction. Also feel free to preview them at www.northernlivestockvideo.com.

Please join us on Monday, April 14th at 4 PM, for "Happy Hour Bull Preview". Plenty of refreshments, snacks, and fellowship among ranchers and TBT consignors to be had while previewing the bulls.

We will see you at the sale on Tuesday, April 15th. You will hugely appreciate this set of "Cowboy Kind" Angus Bulls!

TBT Crew and Consignors





PERFORMANCE SALE

Tuesday,

APRIL 15, 2025

Lunch 11:30 AM Sale 1:00 PM
WESTERN LIVESTOCK AUCTION
GREAT FALLS, MT

~ General Information ~

Pre-Sale Viewing of Bulls

The bulls will be at Western Livestock Auction on Sunday, April 13, 2025 and available for viewing. Prior to that they are available for viewing anytime at Muddy Creek Feedyard, 2 miles west of Vaughn, MT. They are in Pens 70, 71 and 72.

Sale Day Phones

Western Livestock Auction
406/727-5400

Ryan Perry 406/788-9869

Karnell Perry 406/390-5473

Auctioneer:

Joe Goggins 406/861-5664

Livestock Press

Kurt Kangas 406/366-4190.....Angus Journal/Angus Ass'n
John Goggins 406/698-4159 Western Ag Reporter
Devin Murnin 406/696-1502 Western Livestock Journal
Curt Cox 307/630-4604 Wyoming Livestock Roundup

Footnotes are provided by consignors. Feel free to contact consignors about their bulls. Consignor contact information is on page 3.

Fertility

Every bull selling has had a complete breeding physical and has been semen tested. Bulls sell guaranteed to be breeders via natural service. Guarantees are between the buyer and TBT Consignor only!

Veterinarian: Dr. Craig Moore, 406/466-3020

Health

All bulls have also been tested negative for BVD. Bulls have completed all requirements for immediate interstate shipment. If your state or providence requires more for import than has been completed, it will be done immediately after the sale. TBT will assume all extra vet expenses for interstate shipment.

Delivery

Free delivery to central locations (stockyards, etc.) within 500 miles of Great Falls, MT on all bulls selling for \$4000 or more, or the purchase of multiple bulls. Delivery beyond 500 miles will be billed at cost. Buyers picking up bulls within five days will be given a \$50 rebate per bull.

Insurance

Mortality Insurance is available thru Tyler Holland, Novich Insurance Agency. See page 4 for insurance options. Buyer pays for ½ and TBT Consignor pays for ½. Buyers if you choose to insure your bulls please do so when settling for bulls.

Performance Data

EPD's listed in this catalog are as of March 14, 2025.

Transportation & Accommodations

Great Falls is served by several airlines. We will meet any planes if notified.

O'Haire Motor Inn 17 7th St. S, Great Falls, MT.....406-454-2141

La Quinta Inn 600 River Dr S, Great Falls, MT.....406-761-2600

Ask for the Treasure Bull Test Rates.

Terms and Conditions

Bulls sell under the terms and conditions of the American Angus Association. Settlement is cash. Settlement must be made at the time of sale unless arrangements have been made prior to sale with individual consignor and TBT. Registration papers will be transferred to buyer when settlement has been made. Announcements made from auction block take precedence over printed material. Auctioneer will settle any disputes of bids. Anyone attending the sale does so at their own risk. TBT and Western Livestock Auction, LLC assume no liability, legal or otherwise, for any accidents which may occur.

2025 INDEX OF CONSIGNORS

Fourmile Creek Angus
Shawn Hystad
406-231-5297
shawn-del27@yahoo.com

MLK Angus
Mark & Lynn Keller
406-431-0872
mlkangus@outlook.com

Troyer Ranch LLC
Wayne or Atlee Troyer
406-707-0245
heartlandcc@ibyfax.com

Granger Angus
Jim & Beth Granger
406-736-5588
blackcow@3rivers.net

Dalbey Angus
John Dalbey
406-546-7822
jd4947@yahoo.com

Jakob Dalbey
406-417-0661
jakobdalbey@gmail.com

Springvale Ranch
Shawn Christensen
406-741-2519
springvale@hotsprings.net

Windy Ridge Angus
Karen Davis
406-737-4320
windyridge@itstriangle.com

Hamilton Angus Ranch
Thomas Hamilton
541-403-4163
hamiltonangusranch@gmail.com

Jacobsen Ranch
Wade Jacobsen
406-799-5889
wadej@3riversdbs.net

Legacy Ridge Angus
Cody Arnold
406-390-5417
codyarnold50@gmail.com

Gem State Angus Ranch
Kevin Thibault or Jan Grant
435-881-3974
klthibault@yahoo.com

Beuerman Angus
Erich Beuerman
406-551-3759
ebeuerman1@gmail.com

McFadgen Angus
Mark & Kathy McFadgen
406-360-8701
mcfadgenmark@hotmail.com

Willekes Angus
Bob Willekes
406-590-2520
mtmarblegranite@yahoo.com

Marshall Willekes
406-590-7011
marshallwillekes@yahoo.com

Koby & Stephen Preputin
Shawn Preputin
406-390-1480
spreputin@live.com

Casha Corder
Trampus Corder
406-231-8515
trampus@corderland.com

Sunny Rim Angus
Wes McAlpine
406-937-5400
marlena.mcalpine@yahoo.com

MSU Angus
Dept of Animal and Range Sciences
Tim DelCurto
406-994-3708
timothy.delcurto@montana.edu

Olson Cattle Co
Wendy Olson
406-261-3782
occ@blackfoot.net

Mardi Linhart Angus
Mike Vanek
406-366-4668
mmcattleservices@yahoo.com

Skogen GK Angus
Orville & Arlene Skogen
406-264-5270
skogenlivestock@hotmail.com

RK Perry
Ryan & Karnell Perry
406-788-9869
rkperry@icloud.com

2025 TREASURE BULL TEST



The Jackpot was started several years ago by Russ and Barb Pepper as a little contest where every consignor gets a \$100 bill thrown in the pot. The consignor picks one bull from there consignment list on the day of arrival. The bull they think will gain the best. These bulls are indexed separately from the TBT Index. ½ ADG Ratio, ¼ 205 Day Ratio, and ¼ 365 Day Ratio. Winners take all!

- Jackpot Champion ~ Lot 130 ~ A son of Deer Valley Growth Fund from Mardi Linhart with a 114 Index
- Reserve Champion ~ Lot 137 ~ Baldrige Jigsaw J523 son from Skogen GK Livestock with a 113.25 Index
- 3rd Place Champion ~ Lot 113 ~ A son of Vermilion Fair N Square J280 from Sunny Rim Angus with a 110.50 Index

HOW TO BID - INSURANCE



Bid through Northern Livestock Video Auction's NEW Online Bidding Platform! Desktop and Mobile Friendly

For the Desktop:

1. It is best to use the Google Chrome web browser.
2. **Pre-Register at least one day prior to the sale.**
3. Go to bid.northernlivestockvideo.com and click "Get Approved to Bid".
4. Doing this will prompt you to create an account, after which you will fill out a bidder approval application.
5. Once Approved, an email will be sent to the email account provided, please click the link in that email to activate your account and a buyer number will be provided.
6. On sale day (after approval), visit www.northernlivestockvideo.com to view and bid!

For the Mobile:

Use your mobile device to download the Northern App and follow the above steps to get approved.

There is an instructional video on how to register to bid on our website, www.northernlivestockvideo.com if you have any questions.

For technical assistance with Internet Viewing and Bidding Questions, call Sam Fraser 406-860-0590.

Phone Bidding:

Anyone wanting to use the Northern Livestock phone bank to bid must pre-register and have a bid number to bid on the phone.

To register with NLVA call 866-616-5035 Before Sale Day.

View the Online CATALOG and VIDEO CLIP of each BULL selling at www.northernlivestockvideo.com

Bidders who are successful in making purchases will be contacted following the sale to make payment and delivery arrangements.

Northern Livestock's Sale Day Bid Line: **1-406-245-0889.**

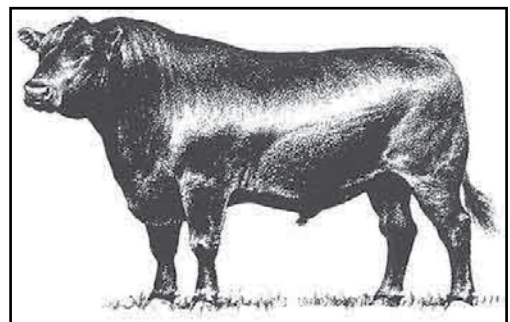
BULL MORTALITY INSURANCE

Novich Insurance Agency, agent for XL Catlin Insurance Co

Tyler Holland
(406) 684-5264
tylerholland@3rivers.net

One Year Policy Term, from the date of the sale
Full Mortality Only Option = 8.5%
\$200 minimum premium

Full Mortality
100% of the value of the bull in the event of death or humane destruction as a result of a life-threatening injury. No deductibles, no co-insurance.





PROFIT STARTS WITH THE RIGHT FOUNDATION

IF YOU'RE TARGETING QUALITY-DRIVEN
PREMIUMS, SHE IS HALF THE GENETIC EQUATION.

Targeting the Brand™ identifies registered Angus cattle with the genetic potential to raise calves more likely to meet all 10 Certified Angus Beef™ brand specifications.



Minimum Genetic Requirements

Marbling EPD (Marb) +0.65

Grid Value (\$G) +55.0

For more information on Targeting the Brand™ visit CABcattle.com.



Driving the science of better breeding

There's little room for error in the cattle business. Producers need the most advanced information to make smart selection decisions, and Angus Genetics Inc. (AGI) provides it through genomic-enhanced expected progeny differences (GE-EPDs).

EPDs that traditionally contained all pedigree, performance and progeny information now also include results from available genomic, or DNA, tests. Breeders who use genomic technology give buyers access to AGI-generated GE-EPDs that provide:

Increased predictability and decreased risk for young and unproven animals due to enhanced accuracy of EPDs

Better characterization of genetics for difficult-to-measure performance traits (such as carcass traits, maternal traits and feed efficiency)

The ability to make more rapid progress for traits that are important to you, due to:

- more accurate selection
- easier identification of genetic outliers
- the ability to propagate young animals with confidence earlier in their lives

In fact, GE-EPDs on unproven animals have the same amount of accuracy as if they had recorded 8-33 calves, depending on the trait. That's valuable insight, offered regularly through the breed's weekly national cattle evaluation at www.angus.org.

How do you know if EPDs are genomic-enhanced?

Ask your breeder, refer to the registration paper, or look for the AGI GE-EPD logo, Angus GS™ powered by partner Neogen GeneSeek or the HD50k or i50k by partner Zoetis.



BLACK ANGUS BULLS

1

4MC Winchester 2404

[AMF-CAF-D2F-DDF-M1F-NHF-OHF-OSF-RDF]

Fourmile Creek Angus

Black Angus

AAA#: 21062158

DOB: 02/02/24

Tattoo: 2404

Connealy Clarity
Poss Winchester
Poss Blueblood 6502

G A R Hometown
Hart Lady Texan 1116
Hart Lady Texan 5231

Entry Wt	Final Wt
760	1146
ADG	ADG Ratio
3.57	97
WDA	WDA Ratio
2.92	92
TBT Ratio	
97.33	



	BW	205 Day Wt.	205 Day Ratio	365 Day Wt.	365 Day Ratio	TBT Ratio
	73	671	100	1137	95	97.33
CED	BW	WW	YW	SC	DOC	HP
+17	-1.9	+75	+137	+80	+23	+12.8
MILK	MARB	RE	\$M	\$W	\$B	\$C
+23	+1.86	+95	+82	+74	+238	+391



Poss Winchester - Sire of Lot 1

6

MLK True Grit 444

MLK Angus

Black Angus

AAA#: 20916642

DOB: 01/17/24

Tattoo: 444

Square B True North 8052
Basin True Grit 1021
Basin Camilla 9044

Sitz Stellar 726D
Basin Heather Bloom 2435
Basin Heather Bloom 6235

Entry Wt	Final Wt
872	1220
ADG	ADG Ratio
3.22	87
WDA	WDA Ratio
2.99	94
TBT Ratio	
96.67	



	BW	205 Day Wt.	205 Day Ratio	365 Day Wt.	365 Day Ratio	TBT Ratio
	77	774	100	1230	103	96.67
CED	BW	WW	YW	SC	DOC	HP
+2	+5	+83	+145	+44	+17	+15.1
MILK	MARB	RE	\$M	\$W	\$B	\$C
+26	+1.18	+88	+66	+78	+185	+306



Basin True Grit 1021 - Sire of Lot 6

7

TR3 Logo 401

[AMF-CAF-D2F-DDF-M1F-NHF-OHF-OSF-RDF]

Troyer Ranch LLC

Black Angus

AAA#: 21058019

DOB: 01/12/24

Tattoo: 401

SITZ Logo 12964
Sitz Logo 6197
Sitz Pride 0128

TR3 Outside 703
TR3 Airy Primrose 924
TR3 Airy Primrose 707

Entry Wt	Final Wt
889	1303
ADG	ADG Ratio
3.83	104
WDA	WDA Ratio
3.15	99
TBT Ratio	
102.00	



	BW	205 Day Wt.	205 Day Ratio	365 Day Wt.	365 Day Ratio	TBT Ratio
	80	749	103	1181	99	102.00
CED	BW	WW	YW	SC	DOC	HP
+3	+1.2	+72	+121	+1.46	+13	+9.9
MILK	MARB	RE	\$M	\$W	\$B	\$C
+22	+0.30	+40	+43	+68	+115	+192



Sitz Logo 6197 - Sire of Lots 7 & 12

FROM BREED LEADING SIRES

8 **TR3 Resilient 402** [AMF-CAF-D2F-DDF-M1F-NHF-OHF-OSF-RDF] **Troyer Ranch LLC**

Black Angus
 AAA#: 21060146
 DOB: 01/12/24
 Tattoo: 402

Sitz Stellar 726D
 Sitz Resilient 10208
 Sitz Miss Burgess 1856
 Casino Bomber N33
 TR3 Duchess 034
 Vermilion Duchess 8424

	Entry Wt	Final Wt
	856	1288
	ADG	ADG Ratio
	4.00	108
	WDA	WDA Ratio
	3.12	98

	BW	205 Day Wt.	205 Day Ratio	365 Day Wt.	365 Day Ratio	TBT Ratio
	85	717	98	1181	99	101.67
CED	BW	WW	YW	SC	DOC	HP
+9	+2	+72	+130	+1.55	+3	+11.1
MILK	MARB	RE	\$M	\$W	\$B	\$C
+31	+0.73	+0.73	+0.61	+0.75	+1.48	+2.53

Very docile Resilient son out of a nice moderate framed Bomber daughter. Top 10% Claw and Angle. Top 5% PAP.

10 **TR3 Tahoe 406** [AMF-CAF-D2F-DDF-M1F-NHF-OHF-OSF-RDF] **Troyer Ranch LLC**

Black Angus
 AAA#: 21058171
 DOB: 01/16/24
 Tattoo: 406

Tehama Upward Y238
 Tehama Tahoe B767
 Tehama Mary Blackbird Y684
 PGC Capitalist 5002
 A A R Blackbird 8385
 A A R Blackbird 0062

	Entry Wt	Final Wt
	891	1297
	ADG	ADG Ratio
	3.76	102
	WDA	WDA Ratio
	3.17	99

	BW	205 Day Wt.	205 Day Ratio	365 Day Wt.	365 Day Ratio	TBT Ratio
	95	812	111	1189	99	104.00
CED	BW	WW	YW	SC	DOC	HP
+9	+8	+76	+123	+1.59	+20	+12.4
MILK	MARB	RE	\$M	\$W	\$B	\$C
+32	+0.57	+0.49	+0.75	+0.85	+1.39	+2.55

Thick made Tahoe son out of a well-built cow that does it all by herself. Dam production 4@108, calving interval 367.

9 **TR3 Resilient 403** [AMF-CAF-D2F-DDF-M1F-NHF-OHF-OSF-RDF] **Troyer Ranch LLC**

Black Angus
 AAA#: 21060208
 DOB: 01/14/24
 Tattoo: 403

Sitz Stellar 726D
 Sitz Resilient 10208
 Sitz Miss Burgess 1856
 A A R Ten X 3052
 TR3 Patti Kelton 721
 K A S Patti Kelton 7413

	Entry Wt	Final Wt
	899	1366
	ADG	ADG Ratio
	4.32	117
	WDA	WDA Ratio
	3.32	104

	BW	205 Day Wt.	205 Day Ratio	365 Day Wt.	365 Day Ratio	TBT Ratio
	84	721	99	1239	104	106.67
CED	BW	WW	YW	SC	DOC	HP
+4	+1	+68	+127	+1.29	+24	+10.4
MILK	MARB	RE	\$M	\$W	\$B	\$C
+40	+0.75	+0.19	+0.80	+0.81	+1.13	+2.27

Resilient son out of as consistent a cow as we have. This bull should produce very nice replacement heifers. Top 10% Claw and Angle.

11 **TR3 Resilient 407** [AMF-CAF-D2F-DDF-M1F-NHF-OHF-OSF-RDF] **Troyer Ranch LLC**

Black Angus
 AAA#: 21060207
 DOB: 01/17/24
 Tattoo: 407

Sitz Stellar 726D
 Sitz Resilient 10208
 Sitz Miss Burgess 1856
 Ellingson Consistent 6235
 A A R Blackbird 8224
 A A R Blackbird 4236

	Entry Wt	Final Wt
	869	1261
	ADG	ADG Ratio
	3.63	98
	WDA	WDA Ratio
	3.09	97

	BW	205 Day Wt.	205 Day Ratio	365 Day Wt.	365 Day Ratio	TBT Ratio
	91	753	103	1155	97	99.33
CED	BW	WW	YW	SC	DOC	HP
+1	+2.5	+80	+128	+0.34	+9	+13.4
MILK	MARB	RE	\$M	\$W	\$B	\$C
+28	+0.47	+0.99	+0.96	+0.83	+1.44	+2.83

Pathfinder Dam. Top 5% Claw and Angle. Dam production 5@104, calving interval 358.



Sitz Resilient 10208 - Sire of Lots 8, 9, 11, 13, 117 & 121



Tehama Tahoe B767 - Sire of Lot 10

BLACK ANGUS BULLS

12 TR3 Logo 408 [AMF-CAF-D2F-DDF-M1F-NHF-OHF-OSF-RDF]

Black Angus
AAA#: 21058413
DOB: 01/17/24
Tattoo: 408

SITZ Logo 12964
Sitz Logo 6197
Sitz Pride 0128
A A R Foreman 7733
TR3 Ankonian 928
A A R Ankonian 6674

Troyer Ranch LLC

Entry Wt	Final Wt
976	1445
ADG	ADG Ratio
4.34	117
WDA	WDA Ratio
3.54	111

	BW	205 Day Wt.	205 Day Ratio	365 Day Wt.	365 Day Ratio	TBT Ratio
	80	830	114	1320	110	113.67
CED	BW	WW	YW	SC	DOC	HP
+6	+4	+92	+156	+1.62	+24	+15.8
MILK	MARB	RE	\$M	\$W	\$B	\$C
+29	+49	+32	+79	+93	+129	+246

Big high indexing Logo son out of another consistent cow. Standout since birth. Top 5% WW and YW. Dam production 4@104, calving interval 366.

14 TR3 Payweight 412 [AMF-CAF-D2F-DDF-M1F-NHF-OHF-OSF-RDF]

Black Angus
AAA#: 21058412
DOB: 02/12/24
Tattoo: 412

Basin Payweight 1682
JVC Payweight J5
SS Blackcap Y3296
A A R Frontman 3132
A A R Patti Kelton
A A R Patti Kelton 6069

Troyer Ranch LLC

Entry Wt	Final Wt
793	1231
ADG	ADG Ratio
4.06	110
WDA	WDA Ratio
3.22	101

	BW	205 Day Wt.	205 Day Ratio	365 Day Wt.	365 Day Ratio	TBT Ratio
	94	716	98	1180	99	102.33
CED	BW	WW	YW	SC	DOC	HP
+7	+6	+60	+115	+1.86	+29	+13.4
MILK	MARB	RE	\$M	\$W	\$B	\$C
+35	+34	+54	+63	+64	+159	+269

Dam is a cow that we bought from Arntzen's, she always brings in a nice calf. Dam production 5@106 with a 362-day calving interval.

13 TR3 Resilient 404 [AMF-CAF-D2F-DDF-M1F-NHF-OHF-OSF-RDF]

Black Angus
AAA#: 21060145
DOB: 01/15/24
Tattoo: 404

Sitz Stellar 726D
Sitz Resilient 10208
Sitz Miss Burgess 1856
S A V Rainfall 6846
TR3 Lady Kelton 115
TR3 Lady Kelton 807

Troyer Ranch LLC

Entry Wt	Final Wt
753	1232
ADG	ADG Ratio
4.44	120
WDA	WDA Ratio
3.00	94

	BW	205 Day Wt.	205 Day Ratio	365 Day Wt.	365 Day Ratio	TBT Ratio
	68	691	95	1156	97	104.00
CED	BW	WW	YW	SC	DOC	HP
+15	-3.1	+62	+113	+1.15	+12	+15.2
MILK	MARB	RE	\$M	\$W	\$B	\$C
+24	+97	+23	+78	+67	+141	+261

Sure shot heifer bull that did very well on test. Dam is a nice Rainfall daughter. We have a maternal brother in the bull pen that looks really good.

15 Granger Thedford 410

Black Angus
AAA#: 21038437
DOB: 02/08/24
Tattoo: 410

Bar R Jet Black 5063
Hoffman Thedford
HA Rito Lady 3839
Sitz Resilient 10208
Granger Pride Rachel 215
Granger Pride 037

Granger Angus

Entry Wt	Final Wt
855	1208
ADG	ADG Ratio
3.27	88
WDA	WDA Ratio
3.13	98

	BW	205 Day Wt.	205 Day Ratio	365 Day Wt.	365 Day Ratio	TBT Ratio
	88	853	109	1227	103	100.00
CED	BW	WW	YW	SC	DOC	HP
+5	+1.3	+79	+136	+1.73	+9	+18.5
MILK	MARB	RE	\$M	\$W	\$B	\$C
+42	+61	+86	+97	+92	+156	+299

Top 1% Milk, top 2% \$M, top 3% HP and top 20% \$W out of a first calf heifer with a 109 wean ratio.



Hoffman Thedford - Sire of Lots 15, 16, 71 & 72

16 Granger Thedford 421

Black Angus
AAA#: 21038432
DOB: 02/08/24
Tattoo: 421

Bar R Jet Black 5063
Hoffman Thedford
HA Rito Lady 3839
Heiken Broadview
Granger Pride 218
Granger Pride 051

Granger Angus

Entry Wt	Final Wt
786	1191
ADG	ADG Ratio
3.75	101
WDA	WDA Ratio
3.09	97

	BW	205 Day Wt.	205 Day Ratio	365 Day Wt.	365 Day Ratio	TBT Ratio
	80	779	99	1204	101	100.33
CED	BW	WW	YW	SC	DOC	HP
+16	-6	+77	+137	+1.73	+15	+16.0
MILK	MARB	RE	\$M	\$W	\$B	\$C
+31	+81	+1.15	+87	+84	+171	+309

Calving ease specialist with a +16 CED. Top 2% CED. Top 10% PAP, top 10% \$M, top 10% RE and top 15% \$C.

FROM BREED LEADING SIRES

17 Granger Pacman 4425

Granger Angus

Black Angus
AAA#: 21037124
DOB: 02/17/24
Tattoo: 4425

Sterling Pacific 904
Granger Pacman 224
Granger Eileen 937
WPAF Believe
Granger Pride 923
Granger Pride 482

Entry Wt	Final Wt
796	1288
ADG	ADG Ratio
4.56	123
WDA	WDA Ratio
3.42	107

ANGUS		BW	205 Day Wt.	205 Day Ratio	365 Day Wt.	365 Day Ratio	TBT Ratio
ANGUS		92	815	104	1257	105	110.67
CED	BW	WW	YW	SC	DOC	HP	
+6	+2.1	+69	+126	+1.99	+15	+10.3	
MILK	MARB	RE	\$M	\$W	\$B	\$C	
+32	+4.3	+7.5	+49	+66	+134	+223	

Top 3% scrotal, top 15% Milk. Dam 4/100 weaning. Grand dam 6/103. Big gainer with a 123 ratio.

19 Granger Prolific 407

Granger Angus

Black Angus
AAA#: 21038592
DOB: 02/21/24
Tattoo: 407

Ellingson Profound 8155
Ellingson Prolific
EA Queen 8070
Granger Great Falls 630
Granger Pride 820
Granger Pride 578

Entry Wt	Final Wt
863	1345
ADG	ADG Ratio
4.46	121
WDA	WDA Ratio
3.61	113

ANGUS		BW	205 Day Wt.	205 Day Ratio	365 Day Wt.	365 Day Ratio	TBT Ratio
ANGUS		102	834	106	1321	110	112.33
CED	BW	WW	YW	SC	DOC	HP	
-9	+6.7	+96	+161	+1.76	+31	+16.4	
MILK	MARB	RE	\$M	\$W	\$B	\$C	
+28	+7.2	+9.8	+83	+73	+181	+318	

Full Power cow bull. Twelve EPD's in the top 10%. Top 2% for Claw and Angle, Scrotal and Weaning. Top 3% for Yearling. Top 10% for Docility, Heifer Preg and \$M. Great cow with 4/110 weaning weight.

18 Granger Pacman 400

Granger Angus

Black Angus
AAA#: 21037114
DOB: 02/18/24
Tattoo: 400

Sterling Pacific 904
Granger Pacman 224
Granger Eileen 937
H A R B Windy 758 J H
Granger Pride 499
Granger Pride 275

Entry Wt	Final Wt
829	1228
ADG	ADG Ratio
3.69	100
WDA	WDA Ratio
3.27	103

ANGUS		BW	205 Day Wt.	205 Day Ratio	365 Day Wt.	365 Day Ratio	TBT Ratio
ANGUS		91	758	97	1217	102	99.67
CED	BW	WW	YW	SC	DOC	HP	
+3	+2.4	+68	+127	+2.14	+20	+10.3	
MILK	MARB	RE	\$M	\$W	\$B	\$C	
+29	+7.5	+8.7	+63	+86	+150	+258	

Top 2% Scrotal, Foot Angle is top 5%, Claw is top 20%. Dam 9/101 weaning, Grand Dam 7/107.

20 Granger Prolific 413

Granger Angus

Black Angus
AAA#: 21038594
DOB: 02/09/24
Tattoo: 413

Ellingson Profound 8155
Ellingson Prolific
EA Queen 8070
Granger Cash 642
Granger Pride Effie 829
Granger Pride Effie 182

Entry Wt	Final Wt
856	1342
ADG	ADG Ratio
4.50	122
WDA	WDA Ratio
3.49	109

ANGUS		BW	205 Day Wt.	205 Day Ratio	365 Day Wt.	365 Day Ratio	TBT Ratio
ANGUS		88	768	98	1279	107	109.00
CED	BW	WW	YW	SC	DOC	HP	
+4	+4	+80	+145	+9.2	+19	+21.3	
MILK	MARB	RE	\$M	\$W	\$B	\$C	
+27	+8.2	+7.2	+90	+76	+186	+331	

High fertility with Top 1% Heifer Preg. Top 3% \$M, Top 10% Claw and Angle and \$C. Top 15% for calving ease maternal.



Granger Pacman 224 - Sire of Lots 17, 18, 139 & 144



Ellingson Prolific - Sire of Lots 19, 20, 26, 27, 28, 29, 41, 43, 44, 50, 51, 52, 54, 57, 59, 60, 85, 86, 87, 94 & 95

BLACK ANGUS BULLS

21 Granger Versatile 444

Granger Angus

Black Angus
 AAA#: +21075982
 DOB: 02/24/24
 Tattoo: 444

Baldridge Forecaster B160
 Baldridge Versatile
 Baldridge Blackbird A030
 Granger Great Falls 053
 Curtin Erroline 3039
 Blue Ston Erroline 8040

Entry Wt	Final Wt
870	1230
ADG	ADG Ratio
3.33	90
WDA	WDA Ratio
3.32	104



BW	205 Day Wt.	205 Day Ratio	365 Day Wt.	365 Day Ratio	TBT Ratio	
86	783	114	1210	101	101.67	
CED	BW	WW	YW	SC	DOC	HP
+3	+3.7	+85	+149	+1.35	+24	+14.6
MILK	MARB	RE	\$M	\$W	\$B	\$C
+19	+1.38	+34	+70	+65	+174	+296

Top 10% wean, yearling and marble. Negative PAP EPD in top 15%. This is the last ET calf from a cow that has sold 9 bull calves at auction for \$10,000 or more.

23 JD Man In Black 48

Dalbey Angus

Black Angus
 AAA#: 21067722
 DOB: 01/27/24
 Tattoo: 48

Bar R Jet Black 5063
 LAR Man In Black
 JMB Maxine TG 2131
 S A V Resource 1441
 JD 1441 Jestress 77
 JD 307R Jestress 912W

Entry Wt	Final Wt
1005	1408
ADG	ADG Ratio
3.73	101
WDA	WDA Ratio
3.54	111



BW	205 Day Wt.	205 Day Ratio	365 Day Wt.	365 Day Ratio	TBT Ratio	
95	796	109	1310	109	106.33	
CED	BW	WW	YW	SC	DOC	HP
+3	+3.9	+90	+148	+1.48	+20	+13.6
MILK	MARB	RE	\$M	\$W	\$B	\$C
+27	+59	+1.03	+65	+76	+163	+276

Thick made bull that was a standout all summer. Dam is a big bodied cow with good feet as an 8-year-old. Take a look at the maternal power in this pedigree. Selling 2/3 Interest and Full Possession.

22 JD Man In Black 41

Dalbey Angus

Black Angus
 AAA#: 21067723
 DOB: 01/08/24
 Tattoo: 41

Bar R Jet Black 5063
 LAR Man In Black
 JMB Maxine TG 2131
 ZWT Summitt 6507
 JD 6507 Jestress 910
 JD 5T Jestress 312

Entry Wt	Final Wt
1050	1515
ADG	ADG Ratio
4.31	116
WDA	WDA Ratio
3.63	114



BW	205 Day Wt.	205 Day Ratio	365 Day Wt.	365 Day Ratio	TBT Ratio	
90	855	117	1366	114	115.00	
CED	BW	WW	YW	SC	DOC	HP
+5	+1.4	+89	+155	+1.02	+27	+11.6
MILK	MARB	RE	\$M	\$W	\$B	\$C
+34	+4.9	+63	+67	+90	+156	+269

A big, stout bull who was a standout all summer, as he is now, out of a more moderate sized cow. Dam does a great job of raising calves every year, has 2 daughters retained in herd. She has nice feet with tight udder attachment. Selling 2/3 Interest and Full Possession.

25 JD 110 Exclusive 43

Jakob Dalbey

Black Angus
 AAA#: 21067721
 DOB: 02/24/24
 Tattoo: 413

Musgrave 316 Exclusive
 JD Exclusive 110
 JD 8077 Pride 29Z
 Deer Valley Growth Fund
 Vermilion Blackbird 1192
 Vermilion Blackbird 5160

Entry Wt	Final Wt
787	1195
ADG	ADG Ratio
3.78	102
WDA	WDA Ratio
3.23	101



BW	205 Day Wt.	205 Day Ratio	365 Day Wt.	365 Day Ratio	TBT Ratio	
84	752	103	1214	101	102.00	
CED	BW	WW	YW	SC	DOC	HP
+10	+6	+67	+119	+1.39	+16	+14.9
MILK	MARB	RE	\$M	\$W	\$B	\$C
+27	+50	+41	+86	+93	+135	+261

A heifer bull prospect out of a Growth Fund daughter. Really thick dam with a nice udder.



Baldridge Versatile - Sire of Lot 21



LAR Man In Black - Sire of Lots 22 & 23

FROM BREED LEADING SIRES

26 Springvale Prolific 417

Springvale Ranch

Black Angus
AAA#: 21070809
DOB: 03/08/24
Tattoo: 417

Ellingson Profound 8155
Ellingson Prolific
EA Queen 8070
Springvale Bow 951
Springvale Royal Queen 134
Springvale Royal Queen 522

Entry Wt	Final Wt
806	1144
ADG	ADG Ratio
3.13	85
WDA	WDA Ratio
3.20	100
365 Day Ratio	TBT Ratio
101	99.00



BW	205 Day Wt.	205 Day Ratio	365 Day Wt.	365 Day Ratio	TBT Ratio	
92	821	111	1213	101	99.00	
CED	BW	WW	YW	SC	DOC	HP
+0	+2.4	+90	+158	+93	+20	+19.1
MILK	MARB	RE	\$M	\$W	\$B	\$C
+27	+88	+84	+93	+82	+198	+350

Springvale Prolific 417 is a real complete bull with real strong EPDs. 417 dam has 2 calves at 105. She is out of a pathfinder cow.

29 Springvale Prolific 433

Springvale Ranch

Black Angus
AAA#: 21070807
DOB: 03/16/24
Tattoo: 433

Ellingson Profound 8155
Ellingson Prolific
EA Queen 8070
SydGen Aim 0001
Springvale Rachel 513
Springvale Rachel 317

Entry Wt	Final Wt
738	1163
ADG	ADG Ratio
3.94	106
WDA	WDA Ratio
3.33	104
365 Day Ratio	TBT Ratio
103	107.00



BW	205 Day Wt.	205 Day Ratio	365 Day Wt.	365 Day Ratio	TBT Ratio	
88	827	112	1227	103	107.00	
CED	BW	WW	YW	SC	DOC	HP
+0	+3.7	+91	+150	+1.68	+17	+18.9
MILK	MARB	RE	\$M	\$W	\$B	\$C
+24	+66	+1.00	+97	+80	+190	+343

Springvale Prolific 433 has a lot of thickness and is in the top 10% or higher in a lot of traits. He is top 2% \$M, 3% \$F, 5% \$C. 433 dam has 8 progeny with a 104 nursing ratio and a 365-calving interval.

27 Springvale Prolific 406

Springvale Ranch

Black Angus
AAA#: 21070808
DOB: 03/02/24
Tattoo: 406

Ellingson Profound 8155
Ellingson Prolific
EA Queen 8070
Musgrave 316 Exclusive
Springvale Blackcap 124
Springvale Blackcap 009

Entry Wt	Final Wt
774	1144
ADG	ADG Ratio
3.43	93
WDA	WDA Ratio
3.15	99
365 Day Ratio	TBT Ratio
100	101.33



BW	205 Day Wt.	205 Day Ratio	365 Day Wt.	365 Day Ratio	TBT Ratio	
97	822	111	1196	100	101.33	
CED	BW	WW	YW	SC	DOC	HP
+2	+3.0	+83	+149	+1.29	+24	+23.8
MILK	MARB	RE	\$M	\$W	\$B	\$C
+20	+71	+71	+91	+64	+178	+322

Springvale Prolific 406 is the Montana kind. \$M in the top 4% and \$C in the top 10%. 406 dam is a young Exclusive daughter with a lot of volume and a nice udder.

30 Windy Ridge Trail Blazer 412

Windy Ridge Angus

Black Angus
AAA#: 21003652
DOB: 01/25/24
Tattoo: 412

CAR Hobson
CAR Hobson J670
CAR Lucy D205
PA Power Tool 9108
Windy Ridge Miss Bailey 413
Windy Ridge Miss Bailey 614

Entry Wt	Final Wt
852	1227
ADG	ADG Ratio
3.47	94
WDA	WDA Ratio
3.07	96
365 Day Ratio	TBT Ratio
97	98.00



BW	205 Day Wt.	205 Day Ratio	365 Day Wt.	365 Day Ratio	TBT Ratio	
89	740	103	1162	97	98.00	
CED	BW	WW	YW	SC	DOC	HP
+7	+6	+64	+129	+1.25	+28	+12.6
MILK	MARB	RE	\$M	\$W	\$B	\$C
+37	+61	+77	+66	+69	+158	+271

Trail Blazer is a heifer bull whose sire was the top seller at Carr Angus's 2022 sale. He has a small head, and a smooth body built for calving ease. His dam is 11 years old, all of her progeny have been registered. He is nicely put together and moves out well.

28 Springvale Prolific 424

Springvale Ranch

Black Angus
AAA#: 21070806
DOB: 03/10/24
Tattoo: 424

Ellingson Profound 8155
Ellingson Prolific
EA Queen 8070
SydGen Aim 0001
Springvale Bonny 507
Springvale Bonny 377

Entry Wt	Final Wt
801	1154
ADG	ADG Ratio
3.27	88
WDA	WDA Ratio
3.20	100
365 Day Ratio	TBT Ratio
100	98.00



BW	205 Day Wt.	205 Day Ratio	365 Day Wt.	365 Day Ratio	TBT Ratio	
90	786	106	1192	100	98.00	
CED	BW	WW	YW	SC	DOC	HP
+5	+5	+80	+134	+1.17	+10	+18.2
MILK	MARB	RE	\$M	\$W	\$B	\$C
+24	+34	+48	+87	+78	+135	+262

Springvale Prolific 424 has a good look and is a maternal brother to two previous Treasure Test bulls. One sold to Gollaher Angus for \$8000 and another to Joe Freed for \$6000. 424 dam has 8 progeny with a 102 nursing ratio and a 366-day calving interval.



CAR Hobson J670 - Sire of Lot 30
(Pictured as a Yearling)

BLACK ANGUS BULLS

31 Windy Ridge Pacific 429

Windy Ridge Angus

Black Angus
AAA#: 21018910
DOB: 02/07/24
Tattoo: 429

Hoover No Doubt
Sterling Pacific 904
Baldrige Isabel B082

Granger Powerline 560
Windy Ridge Sunflower 817
Windy Ridge Sunflower 912

Entry Wt	Final Wt
942	1336
ADG	ADG Ratio
3.65	99
WDA	WDA Ratio
3.45	108

ANGUS		BW	205 Day Wt.	205 Day Ratio	365 Day Wt.	365 Day Ratio	TBT Ratio
		93	808	112	1274	106	105.67
CED	BW	WW	YW	SC	DOC	HP	
+3	+1.9	+72	+131	+1.33	+29	+14.6	
MILK	MARB	RE	\$M	\$W	\$B	\$C	
+27	+1.14	+82	+80	+67	+175	+307	

Pacific 429 is a top-notch carcass and power bull. His dam is an elite producer with birth 5 @ 98, weaning 5 @ 105, and yearling 3 @ 106. He has a heifer pregnancy of 15 and will work well at high altitudes with a PAP score of -18.

33 Hamilton Craftsman M550

Hamilton Angus Ranch

Black Angus
AAA#: 21002458
DOB: 01/30/24
Tattoo: M550

Sitz Resilient 10208
Connealy Craftsman
Black Cathy of Conanga 8521
Rito 9M25 of Rita 5F56 Pred
Shaw Lady Rito 9M25 4087
Shaw Lady New Day 642S

Entry Wt	Final Wt
764	1198
ADG	ADG Ratio
4.02	109
WDA	WDA Ratio
3.03	95

ANGUS		BW	205 Day Wt.	205 Day Ratio	365 Day Wt.	365 Day Ratio	TBT Ratio
		81	747	100	1146	96	101.67
CED	BW	WW	YW	SC	DOC	HP	
-2	+3.0	+65	+112	+1.18	+18	+15.2	
MILK	MARB	RE	\$M	\$W	\$B	\$C	
+28	+1.01	+51	+76	+62	+137	+254	

32 Windy Ridge Mahomes 431

Windy Ridge Angus

Black Angus
AAA#: 21020107
DOB: 02/08/24
Tattoo: 431

Roseda Powerball23 F091
Byergo Mahomes
Byergo Clover F50

Quaker Hill Firestorm 3PT1
Bonnie Sunset J8 LLR
Bonnie G60 LLR

Entry Wt	Final Wt
886	1250
ADG	ADG Ratio
3.37	91
WDA	WDA Ratio
3.24	102

ANGUS		BW	205 Day Wt.	205 Day Ratio	365 Day Wt.	365 Day Ratio	TBT Ratio
		94	768	107	1228	103	100.33
CED	BW	WW	YW	SC	DOC	HP	
+6	+2.5	+79	+133	+1.17	+8	+14.6	
MILK	MARB	RE	\$M	\$W	\$B	\$C	
+33	+7.5	+89	+55	+76	+178	+286	

Mahomes 431's sire was a graduate of Midland Bull test, purchased by Lost Lake Ranch in 2023, where his ADG was over 5 lbs. a day, along with having superior carcass traits. Mahomes 431 is wide in the rear and is a smooth traveler. He has the traits to sire some outstanding feeder cattle.

35 Hamilton Sunbeam M504

Hamilton Angus Ranch

Black Angus
AAA#: +20984207
DOB: 02/07/24
Tattoo: M504

G A R Sunrise
G A R Sunbeam
G A R Ingenuity 3132
S A V Resource 1441
Baldrige Pratissa E327
Baldrige Pratissa W165

Entry Wt	Final Wt
694	1115
ADG	ADG Ratio
3.90	105
WDA	WDA Ratio
2.88	90

ANGUS		BW	205 Day Wt.	205 Day Ratio	365 Day Wt.	365 Day Ratio	TBT Ratio
		77	660	100	1060	89	98.00
CED	BW	WW	YW	SC	DOC	HP	
+3	+3.9	+86	+143	+63	+17	+11.3	
MILK	MARB	RE	\$M	\$W	\$B	\$C	
+10	+8.1	+1.21	+56	+57	+179	+288	



Sterling Pacific 904 - Sire of Lot 31



G A R Sunbeam - Sire of Lot 35

FROM BREED LEADING SIRES

39 JR Exclusive 4621 [DDF-M1F-OHF]

Black Angus
 AAA#: 21078307
 DOB: 03/01/24
 Tattoo: 4621

Musgrave 316 Exclusive
JD Exclusive 22
 JD 6847 Pride 99

Quaker Hill Rampage 0A36
JR Party Date 7632
 JR Party Date 5640

	BW	205 Day Wt.	205 Day Ratio	365 Day Wt.	365 Day Ratio	TBT Ratio
	80	807	115	1235	103	101.33
CED	BW	WW	YW	SC	DOC	HP
	+4	+2.1	+78	+131		
MILK	MARB	RE	\$M	\$W	\$B	\$C
	+26		+77	+66		

Sire was a past TBT high selling performance bull.

Jacobsen Ranch

43 Legacy Prolific 404 [AMF-CAF-D2F-DDF-M1F-NHF-OHF-OSF-RDF]

Black Angus
 AAA#: 20997772
 DOB: 03/10/24
 Tattoo: 404

Ellingson Profound 8155
Ellingson Prolific
 EA Queen 8070

Macholan Proclamation K087
ECA Queen Mother 969
 Baldco Queen Mother 437

	BW	205 Day Wt.	205 Day Ratio	365 Day Wt.	365 Day Ratio	TBT Ratio
	94	829	103	1288	108	98.67
CED	BW	WW	YW	SC	DOC	HP
	-9	+5.8	+93	+156	+37	+22.5
MILK	MARB	RE	\$M	\$W	\$B	\$C
	+28	+61	+59	+86	+72	+187

Powerfully made, big-time cow bull out of Ellingson Prolific, a bull that has made a big impact in the breed for overall power! This Prolific son is going to put some pounds on the ground! Legacy Prolific 404 incorporates some of the great cows of our program in his pedigree. ECA Queen Mother 969 out of Baldco Queen Mother 437 we purchased from Baldrige Tiedeman continues to be a standout in our program! Top 1% Angle, HP, CW, Top 2% \$F, Top 3% WW, Top 4% MH and Top 5% YW.

41 Legacy Prolific 401 [AMF-CAF-D2F-DDF-M1F-NHF-OHF-OSF-RDF]

Black Angus
 AAA#: 20997756
 DOB: 03/01/24
 Tattoo: 401

Ellingson Profound 8155
Ellingson Prolific
 EA Queen 8070

Top Notch Cowboy Up 801
ECA Emulota 064
 Baldco Emulota 157E

	BW	205 Day Wt.	205 Day Ratio	365 Day Wt.	365 Day Ratio	TBT Ratio
	87	765	108	1231	103	96.67
CED	BW	WW	YW	SC	DOC	HP
	+4	+1.7	+91	+148	+21	+20.8
MILK	MARB	RE	\$M	\$W	\$B	\$C
	+18	+5.8	+52	+98	+80	+295

Lot 41 encapsulates why Prolific sons have been so widely accepted by the commercial cattleman. They have raw power, mass, pounds, and foot quality. This one has been a favorite since early on. Lot 41's broody Cowboy Up dam continues to be a favorite in our program! Legacy Prolific 401 brought home an impressive 108 weaning ratio. Top 1% Angle, HP, Top 2% \$M, Top 4% WW, Top 10% \$W, YW and Claw.

Legacy Ridge Angus

44 Legacy Prolific 405 [AMF-CAF-D2F-DDF-M1F-NHF-OHF-OSF-RDF]

Black Angus
 AAA#: 20997757
 DOB: 03/10/24
 Tattoo: 405

Ellingson Profound 8155
Ellingson Prolific
 EA Queen 8070

Stevenson Easy Money 70688
ECA Queen Mother 050
 Baldco Queen Mother 437

	BW	205 Day Wt.	205 Day Ratio	365 Day Wt.	365 Day Ratio	TBT Ratio
	89	824	103	1291	108	98.33
CED	BW	WW	YW	SC	DOC	HP
	+1	+3.6	+100	+167	+93	+18.1
MILK	MARB	RE	\$M	\$W	\$B	\$C
	+26	+24	+77	+99	+89	+157

This well-balanced, heavy weaning bull covers the bases well to drive genetic progress on all traits relevant to the pocketbooks of commercial cattlemen and women. This dam produced the 2023 TBT Youth Jackpot Champion. Top 1% WW, Top 2% YW, Angle, \$M and \$W. Top 3% CV, Top 4% PAP, Top 10% \$F, YH and HP.

42 Legacy Commerce 402 [AMF-CAF-D2F-DDF-M1F-NHF-OHF-OSF-RDF]

Black Angus
 AAA#: 20997768
 DOB: 03/07/24
 Tattoo: 402

G A R Sunbeam
Connealy Commerce
 Avira of Conanga 814R

HA Payweight 9128
Legacy Lady 208
 ECA Lady 021

	BW	205 Day Wt.	205 Day Ratio	365 Day Wt.	365 Day Ratio	TBT Ratio
	79	774	109	1250	104	97.67
CED	BW	WW	YW	SC	DOC	HP
	+10	+1.1	+79	+140	+6	+16.8
MILK	MARB	RE	\$M	\$W	\$B	\$C
	+33	+75	+1.15	+69	+81	+194

A low birth weight, calving ease sire with the ability to perform in the feedlot! His first calf heifer dam is a tremendous young female posting a 109-weaning ratio on this guy! Top 3% \$F, Top 5% CEM, Top 10% \$W, \$C, CW, RE, Top 15% \$B, SC and HP.

Legacy Ridge Angus



Connealy Commerce - Sire of Lots 42 & 45

BLACK ANGUS BULLS

45 Legacy Commerce 406

[AMF-CAF-D2F-DDF-M1F-NHF-OHF-OSF-RDF]

Black Angus

AAA#: 20997767

DOB: 03/10/24

Tattoo: 406

G A R Sunbeam
Connealy Commerce
Avira of Conanga 814R
Musgrave Crackerjack
Legacy Queen Mother 202
ECA Queen Mother 969

Legacy Ridge Angus

Entry Wt	Final Wt
887	1243
ADG	ADG Ratio
3.30	89
WDA	WDA Ratio
3.50	110

ANGUS	BW	205 Day Wt.	205 Day Ratio	365 Day Wt.	365 Day Ratio	TBT Ratio
	80	852	106	1343	112	102.33
CED	BW	WW	YW	SC	DOC	HP
+4	+3.1	+106	+176	+1.16	+15	+10.7
MILK	MARB	RE	\$M	\$W	\$B	\$C
+32	+5.6	+1.47	+55	+96	+184	+294

An ultra-attractive Connealy Commerce son that puts all the pieces together. Legacy Commerce 406 is stacked with raw power and pounds! Take a look, top 1% ribeye area! He is a powerful, big-time cow bull out of a first calf heifer, Legacy Queen Mother 202. The Queen Mother cow family continues to be a powerhouse in our program! Top 1% WW, YW, \$W, MH, RE, FAT, Top 2% MW, Top 3% CW, Top 10% \$F.

48 Legacy True North 411

[AMF-CAF-D2F-DDF-M1F-NHF-OHF-OSF-RDF]

Black Angus

AAA#: 20997804

DOB: 03/27/24

Tattoo: 411

Square B True North 8052
PGC True North 1034
PGC Shoeshone Girl 4106
Sitz Top Game 561X
Baldco Emulota 157E
JMB Emulota 013

Legacy Ridge Angus

Entry Wt	Final Wt
804	1126
ADG	ADG Ratio
2.98	81
WDA	WDA Ratio
3.33	104

ANGUS	BW	205 Day Wt.	205 Day Ratio	365 Day Wt.	365 Day Ratio	TBT Ratio
	85	762	108	1203	101	96.67
CED	BW	WW	YW	SC	DOC	HP
+10	+1.6	+75	+127	+4.47	+15	+11.2
MILK	MARB	RE	\$M	\$W	\$B	\$C
+31	+4.8	+1.04	+60	+77	+148	+252

Nicely balanced bull, complete package. Dam Baldco Emulota 157E was purchased at Baldridge Tiedeman Angus Production sale and continues to prove she is an excellent female. Dam has an exceptional combination of muscle and maternal traits in an attractive package. Grand Sire, Basin Payweight 1682 sires thick made easy fleshing, high quality females with excellent udders. Top 15% \$W and RE, Top 20% Milk.

50 RKP Prolific 401

RK Perry

Black Angus

AAA#: +21122808

DOB: 02/14/24

Tattoo: 401

Ellingson Profound 8155
Ellingson Prolific
EA Queen 8070
Connealy Countdown
FF Promptitude D134
JF Promptitude B90

Entry Wt	Final Wt
827	1215
ADG	ADG Ratio
3.59	97
WDA	WDA Ratio
3.28	103

ANGUS	BW	205 Day Wt.	205 Day Ratio	365 Day Wt.	365 Day Ratio	TBT Ratio
	82	714	107	1183	99	101.00
CED	BW	WW	YW	SC	DOC	HP
+0	+4.9	+99	+165	+2.28	+14	+22.0
MILK	MARB	RE	\$M	\$W	\$B	\$C
+25	+4.1	+5.6	+107	+83	+162	+317

The donor dam of this bull has 4@107 NR and 3@106 YR.

51 RKP Prolific 403

RK Perry

Black Angus

AAA#: +21122810

DOB: 02/16/24

Tattoo: 403

Ellingson Profound 8155
Ellingson Prolific
EA Queen 8070
Connealy Countdown
FF Promptitude D134
JF Promptitude B90

Entry Wt	Final Wt
773	1249
ADG	ADG Ratio
4.41	119
WDA	WDA Ratio
3.30	103

ANGUS	BW	205 Day Wt.	205 Day Ratio	365 Day Wt.	365 Day Ratio	TBT Ratio
	96	670	107	1225	102	109.33
CED	BW	WW	YW	SC	DOC	HP
-5	+4.6	+97	+164	+3.35	+16	+19.9
MILK	MARB	RE	\$M	\$W	\$B	\$C
+13	+7.2	+4.5	+78	+66	+179	+310

The donor dam of this bull has 4@107 NR and 3@106 YR.

52 RKP Prolific 404

RK Perry

Black Angus

AAA#: +21122811

DOB: 02/17/24

Tattoo: 404

Ellingson Profound 8155
Ellingson Prolific
EA Queen 8070
Connealy Countdown
FF Promptitude D134
JF Promptitude B90

Entry Wt	Final Wt
784	1242
ADG	ADG Ratio
4.24	115
WDA	WDA Ratio
3.29	103

ANGUS	BW	205 Day Wt.	205 Day Ratio	365 Day Wt.	365 Day Ratio	TBT Ratio
	94	696	107	1219	102	108.00
CED	BW	WW	YW	SC	DOC	HP
+0	+4.3	+92	+157	+3.91	+21	+20.8
MILK	MARB	RE	\$M	\$W	\$B	\$C
+25	+4.0	+5.6	+110	+79	+150	+305

The donor dam of this bull has 4@107 NR and 3@106 YR.

54 RKP Prolific 409

RK Perry

Black Angus

AAA#: +21122816

DOB: 02/24/24

Tattoo: 409

Ellingson Profound 8155
Ellingson Prolific
EA Queen 8070
Connealy Countdown
FF Promptitude D134
JF Promptitude B90

Entry Wt	Final Wt
829	1303
ADG	ADG Ratio
4.39	119
WDA	WDA Ratio
3.52	110

ANGUS	BW	205 Day Wt.	205 Day Ratio	365 Day Wt.	365 Day Ratio	TBT Ratio
	95	794	107	1291	108	111.33
CED	BW	WW	YW	SC	DOC	HP
-3	+4.6	+93	+162	+3.89	+21	+19.9
MILK	MARB	RE	\$M	\$W	\$B	\$C
+30	+6.7	+8.4	+98	+81	+180	+331

The donor dam of this bull has 4@107 NR and 3@106 YR.

FROM BREED LEADING SIRES

55 RKP Craftsman 441

RK Perry

Black Angus
AAA#: +21122842
DOB: 03/22/24
Tattoo: 441

Sitz Resilient 10208
Connealy Craftsman
Black Cathy of Conanga 8521
Connealy Countdown
FF Promptitude D134
JF Promptitude B90

Entry Wt	Final Wt
738	1113
ADG	ADG Ratio
3.47	94
WDA	WDA Ratio
3.24	102

ANGUS 35	BW	205 Day Wt.	205 Day Ratio	365 Day Wt.	365 Day Ratio	TBT Ratio
	85	727	107	1173	98	99.67
CED	BW	WW	YW	SC	DOC	HP
+5	+2.0	+80	+141	+95	+17	+17.5
MILK	MARB	RE	\$M	\$W	\$B	\$C
+30	+4.7	+60	+106	+82	+135	+281

The donor dam of this bull has 4@107 NR and 3@106 YR.

57 RKP Prolific 444

RK Perry

Black Angus
AAA#: +21122818
DOB: 03/25/24
Tattoo: 444

Ellingson Profound 8155
Ellingson Prolific
EA Queen 8070
Connealy Countdown
FF Promptitude D134
JF Promptitude B90

Entry Wt	Final Wt
880	1230
ADG	ADG Ratio
3.24	88
WDA	WDA Ratio
3.62	113

ANGUS 35	BW	205 Day Wt.	205 Day Ratio	365 Day Wt.	365 Day Ratio	TBT Ratio
	90	788	107	1307	109	101.33
CED	BW	WW	YW	SC	DOC	HP
+1	+4.8	+94	+164	+67	+10	+22.3
MILK	MARB	RE	\$M	\$W	\$B	\$C
+28	+5.5	+54	+96	+78	+162	+306

The donor dam of this bull has 4@107 NR and 3@106 YR.

56 RKP Craftsman 442

RK Perry

Black Angus
AAA#: +21122843
DOB: 03/23/24
Tattoo: 442

Sitz Resilient 10208
Connealy Craftsman
Black Cathy of Conanga 8521
Connealy Countdown
FF Promptitude D134
JF Promptitude B90

Entry Wt	Final Wt
861	1206
ADG	ADG Ratio
3.19	86
WDA	WDA Ratio
3.53	111

ANGUS 35	BW	205 Day Wt.	205 Day Ratio	365 Day Wt.	365 Day Ratio	TBT Ratio
	87	782	107	1275	107	100.00
CED	BW	WW	YW	SC	DOC	HP
+3	+2.6	+75	+129	+38	+20	+19.8
MILK	MARB	RE	\$M	\$W	\$B	\$C
+35	+9.3	+57	+106	+81	+153	+304

The donor dam of this bull has 4@107 NR and 3@106 YR.

58 RKP Craftsman 445

RK Perry

Black Angus
AAA#: +21122844
DOB: 03/26/24
Tattoo: 445

Sitz Resilient 10208
Connealy Craftsman
Black Cathy of Conanga 8521
Connealy Countdown
FF Promptitude D134
JF Promptitude B90

Entry Wt	Final Wt
746	1175
ADG	ADG Ratio
3.97	107
WDA	WDA Ratio
3.47	109

ANGUS 35	BW	205 Day Wt.	205 Day Ratio	365 Day Wt.	365 Day Ratio	TBT Ratio
	85	738	107	1252	105	106.33
CED	BW	WW	YW	SC	DOC	HP
-6	+5.4	+101	+173	+77	+17	+19.0
MILK	MARB	RE	\$M	\$W	\$B	\$C
+34	+7.6	+91	+90	+88	+174	+316

The donor dam of this bull has 4@107 NR and 3@106 YR.



Connealy Craftsman - Sire of Lots 33, 55, 56, 58, 77, 78, 79, 81, 89 & 103

59 RKP Prolific 446

RK Perry

Black Angus
AAA#: +21122819
DOB: 03/26/24
Tattoo: 446

Ellingson Profound 8155
Ellingson Prolific
EA Queen 8070
Connealy Countdown
FF Promptitude D134
JF Promptitude B90

Entry Wt	Final Wt
858	1210
ADG	ADG Ratio
3.26	88
WDA	WDA Ratio
3.57	112

ANGUS 35	BW	205 Day Wt.	205 Day Ratio	365 Day Wt.	365 Day Ratio	TBT Ratio
	93	791	107	1288	108	101.00
CED	BW	WW	YW	SC	DOC	HP
+0	+3.7	+80	+141	+1.11	+13	+17.8
MILK	MARB	RE	\$M	\$W	\$B	\$C
+31	+6.3	+33	+76	+70	+166	+291

The donor dam of this bull has 4@107 NR and 3@106 YR.

BLACK ANGUS BULLS

60 RKP Prolific 453

RK Perry

Black Angus
 AAA#: +21122820
 DOB: 03/15/24
 Tattoo: 453
 Ellingson Profound 8155
 Ellingson Prolific
 EA Queen 8070
 Connealy Countdown
 FF Promptitude D134
 JF Promptitude B90

Entry Wt	Final Wt
738	1155
ADG	ADG Ratio
3.86	104
WDA	WDA Ratio
3.30	103

ANGUS		BW	205 Day Wt.	205 Day Ratio	365 Day Wt.	365 Day Ratio	TBT Ratio
		90	708	107	1200	100	103.67
CED	BW	WW	YW	SC	DOC	HP	
+5	+1.9	+90	+157	+1.14	+13	+21.9	
MILK	MARB	RE	\$M	\$W	\$B	\$C	
+28	+.55	+.61	+99	+85	+157	+303	

The donor dam of this bull has 4@107 NR and 3@106 YR.

62 GSAR Banker 12P

Gem State Angus

Black Angus
 AAA#: 21038526
 DOB: 02/05/24
 Tattoo: 12P
 Coleman Bravo 6313
 Coleman Banker 9215
 Coleman Donna 4203
 GV Counselor 001
 GSAR Blackbird 51M
 GSAR Blackbird 15K

Entry Wt	Final Wt
833	1254
ADG	ADG Ratio
3.90	105
WDA	WDA Ratio
3.22	101

ANGUS		BW	205 Day Wt.	205 Day Ratio	365 Day Wt.	365 Day Ratio	TBT Ratio
		76	808	111	1264	106	107.33
CED	BW	WW	YW	SC	DOC	HP	
+9	+1.3	+68	+120	+1.14	+18	+9.7	
MILK	MARB	RE	\$M	\$W	\$B	\$C	
+31	+.24	+.41	+71	+72	+137	+249	

Lot 62 was produced by a first calf heifer and is backed by our foundation Blackbird cow family. He offers a balanced set of numbers and outstanding performance ratios. He will make some top feeding cattle and a set of daughters that will stay in the herd. Recommended for larger heifers and cows. **CHAMPION PEN OF 3.**

61 GSAR Stellarator 02P

Gem State Angus

Black Angus
 AAA#: 21037373
 DOB: 01/30/24
 Tattoo: 02P
 Sitz Stellar 726D
 Sitz Stellarator 659H
 SITZ Elsiemere 3173
 S Foundation 514
 GSAR Katie 02H
 GV Katie 499

Entry Wt	Final Wt
884	1272
ADG	ADG Ratio
3.59	97
WDA	WDA Ratio
3.22	101

ANGUS		BW	205 Day Wt.	205 Day Ratio	365 Day Wt.	365 Day Ratio	TBT Ratio
		80	774	106	1198	100	101.00
CED	BW	WW	YW	SC	DOC	HP	
+7	-.2	+64	+107	+1.63	+13	+19.2	
MILK	MARB	RE	\$M	\$W	\$B	\$C	
+32	+.97	-.14	+103	+69	+126	+266	

Lot 61 is an early maturing, moderate framed bull. He is thick from end to end and offers important economic traits; low birthweight, high scrotal, high heifer pregnancy, solid feet, low PAP and a 1% \$M. His dam records; calving interval 5@363, BR 5@97, WR 5@102, YR 4@100, IMF 3@104 & REA 3@104.

63 GSAR Banker 24P

Gem State Angus

Black Angus
 AAA#: 21038507
 DOB: 02/10/24
 Tattoo: 24P
 Coleman Bravo 6313
 Coleman Banker 9215
 Coleman Donna 4203
 Sitz Upward 307R
 GSAR Blackcap May 32M
 S A V Blackcap May 8245

Entry Wt	Final Wt
777	1194
ADG	ADG Ratio
3.86	104
WDA	WDA Ratio
3.11	97

ANGUS		BW	205 Day Wt.	205 Day Ratio	365 Day Wt.	365 Day Ratio	TBT Ratio
		93	749	103	1220	102	103.00
CED	BW	WW	YW	SC	DOC	HP	
-2	+3.6	+84	+144	+1.14	+34	+18.4	
MILK	MARB	RE	\$M	\$W	\$B	\$C	
+35	+.39	+.64	+98	+95	+135	+273	

Lot 63 should be a tremendous cow maker. He is double bred Donna 714 on top of a 307R daughter out of the Blackcap May Cow family that produced Density, Resource, Renown and many others. This bull is high growth, high heifer pregnancy, high milk, high docility, solid feet and top 2% \$M. Recommended for Cows! **CHAMPION PEN OF 3.**



Sitz Stellarator 659H - Sire of Lot 61



Coleman Banker 9215 - Sire of Lots 62, 63 & 66

FROM BREED LEADING SIRES

64 GSAR Right Time 41P

Gem State Angus

Black Angus
AAA#: 21038396
DOB: 02/17/24
Tattoo: 41P

Leachman Right Time
JJ Scheckels Right Time J215
Blackcap May Scheckel F4136
Sitz Resilient 10208
GSAR Pride 06M
GSAR Pride 33Z FA

Entry Wt	Final Wt
746	1169
ADG	ADG Ratio
3.92	106
WDA	WDA Ratio
3.10	97

ANGUS	BW	205 Day Wt.	205 Day Ratio	365 Day Wt.	365 Day Ratio	TBT Ratio
	82	787	108	1208	101	105.00
CED	BW	WW	YW	SC	DOC	HP
+7	+1.0	+65	+111	+65	+19	+16.2
MILK	MARB	RE	\$M	\$W	\$B	\$C
+35	+7.1	+5.1	+89	+76	+130	+258

Lot 64 is tremendous grandson of Leachman Right Time. His sire was purchased out of the Midland Bull Test and is out of a flush sister to Blackcap May 4136. The Bottom side of the pedigree offers Sitz Resilient out of the Hyline Pride cow family that produced Right Time 338. You will travel a lot of miles to find a Montana pedigree that stacks like this! Balanced numbers on a good bull.

66 GSAR Banker 26P

Gem State Angus

Black Angus
AAA#: 21038516
DOB: 02/11/24
Tattoo: 26P

Coleman Bravo 6313
Coleman Banker 9215
Coleman Donna 4203
Deer Valley Unique 5635
GSAR Miss Dawn 28M
GSAR Miss Dawn 16G

Entry Wt	Final Wt
810	1280
ADG	ADG Ratio
4.35	118
WDA	WDA Ratio
3.34	106

ANGUS	BW	205 Day Wt.	205 Day Ratio	365 Day Wt.	365 Day Ratio	TBT Ratio
	76	783	107	1305	109	111.33
CED	BW	WW	YW	SC	DOC	HP
+12	+4	+77	+141	+20	+28	+17.0
MILK	MARB	RE	\$M	\$W	\$B	\$C
+40	+5.6	+4.6	+84	+85	+134	+258

Lot 66 produced by a first calf heifer, is big time performance and spread bull by Coleman Banker. With a +12 CED and a .4 BW he is certainly a heifer bull! He is very balanced in his EPD tabulation and stacks some strong cow power. His dam is off to a great start and has her second AI sired calf at side. Keep the Banker brothers together and build some cows! **CHAMPION PEN OF 3.**



Myers Fair-N-Square M39 - Sire of Lots 67 & 69

67 BEU Fair-N-Square M40

Beuerman Angus

Black Angus
AAA#: 21001410
DOB: 02/05/24
Tattoo: M40

Woodhill Blueprint
Myers Fair-N-Square M39
Myers Miss Beauty M136
J&J Weigh Up 294
BEU Dixie Erica H38
Coleman Dixie Erica 1339

Entry Wt	Final Wt
756	1136
ADG	ADG Ratio
3.52	95
WDA	WDA Ratio
2.92	92

ANGUS	BW	205 Day Wt.	205 Day Ratio	365 Day Wt.	365 Day Ratio	TBT Ratio
	61	726	108	1095	92	98.33
CED	BW	WW	YW	SC	DOC	HP
+16	-2.6	+63	+103	+92	+21	+12.5
MILK	MARB	RE	\$M	\$W	\$B	\$C
+26	+6.0	+4.6	+86	+74	+113	+233

Great heifer bull prospect without sacrificing performance. Top 2% in both CED and BW EPDs. Top 10% \$M.

69 BEU Fair-N-Square M26

Beuerman Angus

Black Angus
AAA#: 21001407
DOB: 02/10/24
Tattoo: M26

Woodhill Blueprint
Myers Fair-N-Square M39
Myers Miss Beauty M136
Quaker Hill Rumpage 0A36
SCC Lady of Peak Dot 285
Lady of Peak Dot 135Z

Entry Wt	Final Wt
791	1198
ADG	ADG Ratio
3.77	102
WDA	WDA Ratio
3.12	98

ANGUS	BW	205 Day Wt.	205 Day Ratio	365 Day Wt.	365 Day Ratio	TBT Ratio
	87	712	106	1150	96	101.33
CED	BW	WW	YW	SC	DOC	HP
-1	+5.1	+84	+131	+1.50	+13	+14.5
MILK	MARB	RE	\$M	\$W	\$B	\$C
+20	+4.2	+1.03	+80	+67	+158	+285

High growth bull for anyone looking to add pounds to their calves, yet still in the top 15% for \$M. Great foot quality with top 2% and 25% for foot angle and claw set EPDs.

71 BEU Thedford M88

Beuerman Angus

Black Angus
AAA#: 21001408
DOB: 02/17/24
Tattoo: M88

Bar R Jet Black 5063
Hoffman Thedford
HA Rito Lady 3839
Marda Swagger 463
Annes Sashay F293 LLR
Iron Anne B190 LLR

Entry Wt	Final Wt
799	1243
ADG	ADG Ratio
4.11	111
WDA	WDA Ratio
3.30	103

ANGUS	BW	205 Day Wt.	205 Day Ratio	365 Day Wt.	365 Day Ratio	TBT Ratio
	89	728	108	1208	101	106.67
CED	BW	WW	YW	SC	DOC	HP
+9	+1.9	+81	+135	+70	+19	+13.5
MILK	MARB	RE	\$M	\$W	\$B	\$C
+31	+5.0	+9.2	+87	+84	+155	+288

Another high performance, growthy bull with a top 10% \$M. These Thedford bulls are real standouts in the pasture.

BLACK ANGUS BULLS

72

BEU Thedford M70

Beuerman Angus

Black Angus
 AAA#: 21001412
 DOB: 03/10/24
 Tattoo: M70

Bar R Jet Black 5063
 Hoffman Thedford
 HA Rito Lady 3839

J&J Weigh Up 294
 BEU Lady H17A
 Coleman Lady 0173

Entry Wt	Final Wt
746	1180
ADG	ADG Ratio
4.02	109
WDA	WDA Ratio
3.32	104



BW	205 Day Wt.	205 Day Ratio	365 Day Wt.	365 Day Ratio	TBT Ratio	
86	725	108	1217	102	106.33	
CED	BW	WW	YW	SC	DOC	HP
+6	+2.8	+96	+162	+1.24	+11	+10.8
MILK	MARB	RE	\$M	\$W	\$B	\$C
+17	+.50	+.78	+55	+76	+169	+274

High growth bull out of a little more moderate dam. Top 2% for WW EPD and top 3% for YW backed up with genomics.

76

Mcfadgen Beau 428

McFadgen Angus

Black Angus
 AAA#: 21109476
 DOB: 03/11/24
 Tattoo: 428

Tehama Patriarch F028
 3C Patriarch 2011
 3C Queen 106 Outside 1869

3C Broken Bow 908G
 Mcfadgen Val & Bow
 Mcfadgen Val 16

Entry Wt	Final Wt
743	1144
ADG	ADG Ratio
3.71	100
WDA	WDA Ratio
3.23	101



BW	205 Day Wt.	205 Day Ratio	365 Day Wt.	365 Day Ratio	TBT Ratio	
89	762	100	1217	102	100.67	
CED	BW	WW	YW	SC	DOC	HP
+0	+4.6	+89	+157	+0.05	+8	+11.2
MILK	MARB	RE	\$M	\$W	\$B	\$C
+23	+.54	+1.16	+68	+74	+169	+287

Bull is out of a Patriarch Son who has big weaning numbers. Lot 76 will produce bigger calves at birth (his BW was 89 lbs.) but the calves will wean big and be big as yearlings. His HD50K test results put him in the top 1% (on a scale of 1 to 100) for WW and 2% for Yearling WT. You can't get any better than that. He weaned at 762 lbs. and gained 3.71 lbs. per day on feed. NOT a Heifer Bull.

74

Mcfadgen Elevate Pat 406

McFadgen Angus

Black Angus
 AAA#: 21083206
 DOB: 02/28/24
 Tattoo: 406

Tehama Patriarch F028
 3C Patriarch 2011
 3C Queen 106 Outside 1869

Sitz Elevation Z64
 KW Elevation May 106
 Warner's Safe May 601

Entry Wt	Final Wt
710	1183
ADG	ADG Ratio
4.38	118
WDA	WDA Ratio
3.23	101



BW	205 Day Wt.	205 Day Ratio	365 Day Wt.	365 Day Ratio	TBT Ratio	
85	719	95	1240	104	105.67	
CED	BW	WW	YW	SC	DOC	HP
+6	+.7	+69	+135	+1.34	+17	+15.0
MILK	MARB	RE	\$M	\$W	\$B	\$C
+24	+.83	+.75	+67	+62	+176	+295

Bull weaned at 710lbs. and is out of one of our best cow lines. Average Daily Gain 4.38 lbs. Want some great replacement heifers? This bull will produce them & is Certified Angus Beef (CAB). Great feet on this cow line. Lots 74, 75 and 76 Bulls are sired by a son of Patriarch who has outstanding WW (Top 2%) and Yearling WT of (Top 1%), \$W of 4% which we all want as producers!

77

Will Craftsman M109

Willekes Angus

Black Angus
 AAA#: +21036661
 DOB: 01/18/24
 Tattoo: M109

Sitz Resilient 10208
 Connealy Craftsman
 Black Cathy of Conanga 8521

S A V Rainfall 6846
 SD Lady Rainfall 0072
 SD Lady 185-8381

Entry Wt	Final Wt
782	1181
ADG	ADG Ratio
3.69	100
WDA	WDA Ratio
2.90	91



BW	205 Day Wt.	205 Day Ratio	365 Day Wt.	365 Day Ratio	TBT Ratio	
67	685	106	1079	90	98.67	
CED	BW	WW	YW	SC	DOC	HP
-4	+2.6	+64	+109	+6.9	+10	+14.4
MILK	MARB	RE	\$M	\$W	\$B	\$C
+38	+1.04	+.76	+87	+75	+165	+301

Full brothers out of a beautiful new Rainfall donor cow whose first 2 calves had a 106 WR.

75

Mcfadgen Patriarch Prime

McFadgen Angus

Black Angus
 AAA#: 21083205
 DOB: 03/15/24
 Tattoo: 436

Tehama Patriarch F028
 3C Patriarch 2011
 3C Queen 106 Outside 1869

HIGH PRIME 4037
 KW BeBe High Prime 109
 Warner's BeBe Fate 804

Entry Wt	Final Wt
776	1172
ADG	ADG Ratio
3.67	99
WDA	WDA Ratio
3.35	105



BW	205 Day Wt.	205 Day Ratio	365 Day Wt.	365 Day Ratio	TBT Ratio	
85	787	105	1256	105	103.00	
CED	BW	WW	YW	SC	DOC	HP
+1	+4.1	+86	+153	+2.13	+24	+17.7
MILK	MARB	RE	\$M	\$W	\$B	\$C
+27	+.19	+1.09	+77	+70	+155	+278

Bull has been a favorite since birth. He weaned at 787 lbs. & 365-day weight of 1,256 lbs. His EPD score for WW (Top 10%) and YW of (Top 10%), SC of Top 2%, HP of Top 10% and great foot scores. His calves should have outstanding growth & impressive weight at weaning time which is what we all hope for! Cow Bull.



3C Patriarch 2011 - Sire of Lots 74, 75 & 76
 (Pictured as a Yearling)

FROM BREED LEADING SIRES

78 Will Craftsman M21

Black Angus
 AAA#: +21036658
 DOB: 01/19/24
 Tattoo: M21

Sitz Resilient 10208
 Connealy Craftsman
 Black Cathy of Conanga 8521

S A V Rainfall 6846
 SD Lady Rainfall 0072
 SD Lady 185-8381

		Willekes Angus				
		Entry Wt	Final Wt			
		778	1257			
		ADG	ADG Ratio			
		4.44	120			
		WDA	WDA Ratio			
		3.10	97			
		TBT Ratio				
		107.33				
CED	BW	WW	YW	SC	DOC	HP
+5	+4	+75	+126	+1.27	+22	+11.3
MILK	MARB	RE	\$M	\$W	\$B	\$C
+35	+49	+1.06	+85	+88	+134	+259

Full brothers out of a beautiful new Rainfall donor cow whose first 2 calves had a 106 WR. 3RD PLACE PEN OF 3.

84 MWA Gable 18M

Black Angus
 AAA#: 21172040
 DOB: 01/27/24
 Tattoo: 18M

Sitz Resilient 10208
 Schiefelbein Gable 311
 Frosty Elba Lizzy 5569

Sitz Onward 9007
 NA Miss Play On 1118
 NA Miss Frontier Play 696

		Marshall Willekes Angus				
		Entry Wt	Final Wt			
		733	1249			
		ADG	ADG Ratio			
		4.78	129			
		WDA	WDA Ratio			
		3.14	98			
		TBT Ratio				
		109.33				
CED	BW	WW	YW	SC	DOC	HP
+15	-.6	+68	+117	+1.03	+27	+14.9
MILK	MARB	RE	\$M	\$W	\$B	\$C
+30	+49	+60	+88	+77	+118	+241

ADG CHAMPION.

79 Will Craftsman M16

Black Angus
 AAA#: +21036669
 DOB: 01/24/24
 Tattoo: M16

Sitz Resilient 10208
 Connealy Craftsman
 Black Cathy of Conanga 8521

S A V Rainfall 6846
 SD Lady Rainfall 0072
 SD Lady 185-8381

		Willekes Angus				
		Entry Wt	Final Wt			
		992	1396			
		ADG	ADG Ratio			
		3.74	101			
		WDA	WDA Ratio			
		3.48	109			
		TBT Ratio				
		104.67				
CED	BW	WW	YW	SC	DOC	HP
-2	+2.5	+78	+131	+1.21	+16	+11.1
MILK	MARB	RE	\$M	\$W	\$B	\$C
+28	+85	+98	+79	+80	+162	+289

Full brothers out of a beautiful new Rainfall donor cow whose first 2 calves had a 106 WR. 3RD PLACE PEN OF 3.

85 MWA Prolific 05M

Black Angus
 AAA#: 21172034
 DOB: 01/15/24
 Tattoo: 05M

Ellingson Profound 8155
 Ellingson Prolific
 EA Queen 8070

Hoover Bullseye M122
 Top Notch Lady 729
 Top Notch Lady Chinook 002

		Marshall Willekes Angus				
		Entry Wt	Final Wt			
		848	1294			
		ADG	ADG Ratio			
		4.13	112			
		WDA	WDA Ratio			
		3.16	99			
		TBT Ratio				
		103.00				
CED	BW	WW	YW	SC	DOC	HP
+3	+3.0	+72	+130	+1.65	+23	+15.8
MILK	MARB	RE	\$M	\$W	\$B	\$C
+20	+17	+84	+74	+55	+122	+232

81 Will Craftsman M04

Black Angus
 AAA#: +21036665
 DOB: 01/20/24
 Tattoo: M04

Sitz Resilient 10208
 Connealy Craftsman
 Black Cathy of Conanga 8521

S A V Rainfall 6846
 SD Lady Rainfall 0072
 SD Lady 185-8381

		Willekes Angus				
		Entry Wt	Final Wt			
		850	1267			
		ADG	ADG Ratio			
		3.86	104			
		WDA	WDA Ratio			
		3.13	98			
		TBT Ratio				
		102.33				
CED	BW	WW	YW	SC	DOC	HP
-2	+3.0	+81	+130	+1.09	+23	+12.5
MILK	MARB	RE	\$M	\$W	\$B	\$C
+29	+57	+80	+95	+85	+135	+270

Full brothers out of a beautiful new Rainfall donor cow whose first 2 calves had a 106 WR. 3RD PLACE PEN OF 3.

86 MWA Prolific 002M

Black Angus
 AAA#: 21178198
 DOB: 01/12/24
 Tattoo: 002M

Ellingson Profound 8155
 Ellingson Prolific
 EA Queen 8070

Connealy Emerald
 HA Blackcap Lady H285
 HA Blackcap Lady 3893

		Marshall Willekes Angus				
		Entry Wt	Final Wt			
		760	1186			
		ADG	ADG Ratio			
		3.94	107			
		WDA	WDA Ratio			
		2.87	90			
		TBT Ratio				
		100.33				
CED	BW	WW	YW	SC	DOC	HP
+6	+1.4	+86	+150	+1.36	+23	+17.4
MILK	MARB	RE	\$M	\$W	\$B	\$C
+15	+79	+51	+89	+70	+167	+306

BLACK ANGUS BULLS

87

MWA Prolific 13M

[OHP]

Black Angus

AAA#: 21172031

DOB: 01/22/24

Tattoo: 13M

Ellingson Profound 8155

Ellingson Prolific

EA Queen 8070

Connealy Guinness

Top Notch Miss Design 837

NA Miss Abe Design 004



	BW	205 Day Wt.	205 Day Ratio	365 Day Wt.	365 Day Ratio	TBT Ratio	
	90	630	98	1118	93	105.67	
CED	BW	WW	YW	SC	DOC	HP	
	-1	+2.4	+69	+124	+70	+25	+18.1
MILK	MARB	RE	\$M	\$W	\$B	\$C	
	+26	+.97	+.22	+92	+61	+156	+294

Marshall Willekes Angus

Entry Wt	Final Wt
725	1228
ADG	ADG Ratio
4.66	126
WDA	WDA Ratio
3.05	96

89

MWA Craftsman 12M

Black Angus

AAA#: 21171992

DOB: 01/21/24

Tattoo: 12M

Sitz Resilient 10208

Connealy Craftsman

Black Cathy of Conanga 8521

Top Notch Chaps 816

MWA Erica J09

Top Notch Erica 645



	BW	205 Day Wt.	205 Day Ratio	365 Day Wt.	365 Day Ratio	TBT Ratio	
	78	673	99	1153	96	106.00	
CED	BW	WW	YW	SC	DOC	HP	
	+1	+1.4	+71	+127	+70	+24	+13.5
MILK	MARB	RE	\$M	\$W	\$B	\$C	
	+33	+.75	+.69	+84	+77	+141	+267

Marshall Willekes Angus

Entry Wt	Final Wt
734	1226
ADG	ADG Ratio
4.56	123
WDA	WDA Ratio
3.03	95

88

MWA Gable 17M

[OHP]

Black Angus

AAA#: 21170326

DOB: 01/27/24

Tattoo: 17M

Sitz Resilient 10208

Schiefelbein Gable 311

Frosty Elba Lizzy 5569

M A R E I Dorado

MWA Miss Playmate 02K

Top Notch Miss Playmate 822



	BW	205 Day Wt.	205 Day Ratio	365 Day Wt.	365 Day Ratio	TBT Ratio	
	70	702	109	1135	95	105.67	
CED	BW	WW	YW	SC	DOC	HP	
	+5	+1.2	+76	+140	+2.26	+34	+11.3
MILK	MARB	RE	\$M	\$W	\$B	\$C	
	+26	+.55	+.88	+64	+69	+172	+287

Marshall Willekes Angus

Entry Wt	Final Wt
703	1156
ADG	ADG Ratio
4.19	113
WDA	WDA Ratio
2.90	91

91

MWA Badlands 06M

Black Angus

AAA#: 21186763

DOB: 01/18/24

Tattoo: 06M

Ellingson Rider Pride 7282

Ellingson Badlands 0285

EA Bells Girl 7617

KOUPALS B&B Pathfinder 8106

Willekes Lady K07

Willekes Lady H09



	BW	205 Day Wt.	205 Day Ratio	365 Day Wt.	365 Day Ratio	TBT Ratio	
	70	701	108	1200	100	110.33	
CED	BW	WW	YW	SC	DOC	HP	
	+12	-.7	+77	+129	+1.67	+4	+16.2
MILK	MARB	RE	\$M	\$W	\$B	\$C	
	+32	+.56	+1.03	+69	+82	+152	+266

Marshall Willekes Angus

Entry Wt	Final Wt
763	1253
ADG	ADG Ratio
4.54	123
WDA	WDA Ratio
3.08	97



Schiefelbein Gable 311 - Sire of Lots 84, 88 & 93



Ellingson Badlands 0285 - Sire of Lots 91 & 92

FROM BREED LEADING SIRES

92 MWA Badlands 09M

Black Angus
 Ellingson Rider Pride 7282
Ellingson Badlands 0285
 EA Bells Girl 7617
 DOB: 01/19/24
 Tattoo: 09M
 FF Conclusion F83
Willekes Pride K23
 JF Pride Z196

	BW	205 Day Wt.	205 Day Ratio	365 Day Wt.	365 Day Ratio	TBT Ratio
HOSOK	82	677	105	1143	96	105.33
CED	BW	WW	YW	SC	DOC	HP
+5	+1.8	+62	+114	+1.16	+18	+16.2
MILK	MARB	RE	\$M	\$W	\$B	\$C
+26	+.43	+.94	+70	+56	+154	+270

Marshall Willekes Angus

Entry Wt	Final Wt
726	1185
ADG	ADG Ratio
4.25	115
WDA	WDA Ratio
2.92	92

95 MWA Prolific 08M [OHP]

Black Angus
 Ellingson Profound 8155
Ellingson Prolific
 EA Queen 8070
 DOB: 01/19/24
 Tattoo: 08M
 Musgrave Crackerjack
MWA Miss Design J23
 Top Notch Miss Design 838

	BW	205 Day Wt.	205 Day Ratio	365 Day Wt.	365 Day Ratio	TBT Ratio
HOSOK	73	692	107	1122	94	106.33
CED	BW	WW	YW	SC	DOC	HP
+2	+1.8	+82	+139	+.27	+16	+19.3
MILK	MARB	RE	\$M	\$W	\$B	\$C
+24	+.96	+.61	+99	+77	+172	+322

Marshall Willekes Angus

Entry Wt	Final Wt
719	1190
ADG	ADG Ratio
4.36	118
WDA	WDA Ratio
2.93	92

93 MWA Gable 02M

Black Angus
 Sitz Resilient 10208
Schiefelbein Gable 311
 Frosty Elba Lizzy 5569
 DOB: 01/14/24
 Tattoo: 02M
 Hoover Bullseye M122
Top Notch Lady 853
 NA Image of a Lady 757

	BW	205 Day Wt.	205 Day Ratio	365 Day Wt.	365 Day Ratio	TBT Ratio
HOSOK	78	710	105	1122	94	104.33
CED	BW	WW	YW	SC	DOC	HP
+9	+.7	+75	+128	+1.07	+24	+18.0
MILK	MARB	RE	\$M	\$W	\$B	\$C
+30	+.44	+.72	+89	+73	+146	+278

Marshall Willekes Angus

Entry Wt	Final Wt
719	1173
ADG	ADG Ratio
4.20	114
WDA	WDA Ratio
2.85	89

99 SKP Forge 6024 [AMF-CAF-D2F-DDF-M1F-NHF-OHF-OSF-RDF]

Black Angus
 Connealy Capitalist 028
PGC Forge
 PGC Shoeshone Girl 4106
 DOB: 03/18/24
 Tattoo: 6024
 Soo Line Motive 9016
PGC Lady Ace 8009
 PGC Lady Ace 6107

	BW	205 Day Wt.	205 Day Ratio	365 Day Wt.	365 Day Ratio	TBT Ratio
ANGUS 35	75	826	118	1291	108	112.67
CED	BW	WW	YW	SC	DOC	HP
+5	+2.9	+87	+145	+.61	+23	+13.2
MILK	MARB	RE	\$M	\$W	\$B	\$C
+28	+.42	+.73	+63	+78	+153	+261

Koby Preputin

Entry Wt	Final Wt
783	1243
ADG	ADG Ratio
4.26	115
WDA	WDA Ratio
3.58	112

Excellent growth and calving ease from a PGC dam providing performance and maternal strength with an exceptional udder. Great volume and depth.
YOUTH CHAMPION.

94 MWA Prolific 20M [M1P]

Black Angus
 Ellingson Profound 8155
Ellingson Prolific
 EA Queen 8070
 DOB: 01/28/24
 Tattoo: 20M
 FF Gold Star JF C74
Willekes Rita G44
 Willekes Rita 142d

	BW	205 Day Wt.	205 Day Ratio	365 Day Wt.	365 Day Ratio	TBT Ratio
HOSOK	91	649	100	1095	92	105.33
CED	BW	WW	YW	SC	DOC	HP
+8	+1.4	+69	+123	+.38	+16	+14.6
MILK	MARB	RE	\$M	\$W	\$B	\$C
+27	+.05	+.83	+91	+70	+131	+261

Marshall Willekes Angus

Entry Wt	Final Wt
687	1183
ADG	ADG Ratio
4.59	124
WDA	WDA Ratio
2.98	93



PGC Forge - Sire of Lots 99 & 100

BLACK ANGUS BULLS

100 SKP Forge 6014 [AMF-CAF-D2F-DDF-M1F-NHF-OHF-OSF-RDF]

Koby Preputin

Black Angus
 AAA#: 21152128
 DOB: 03/15/24
 Tattoo: 6014

Connealy Capitalist 028
 PGC Forge
 PGC Shoeshone Girl 4106

TEX Playbook 5437
 ABP Alliance Lady 915
 ABP Alliance Lady 628

Entry Wt	Final Wt
743	1124
ADG	ADG Ratio
3.53	95
WDA	WDA Ratio
3.21	101

ANGUS 365		BW	205 Day Wt.	205 Day Ratio	365 Day Wt.	365 Day Ratio	TBT Ratio
ANGUS 365		78	766	109	1200	100	101.33
CED	BW	WW	YW	SC	DOC	HP	
+10	+0	+68	+117	+1.17	+15	+18	
MILK	MARB	RE	\$M	\$W	\$B	\$C	
+24	+32	+57	+85	+69	+123	+245	

Maternal calving ease with great growth and development and exceptional gain ratio from this PGC Forge son.

103 CC Quantum Craftsman M17

Casha Corder

Black Angus
 AAA#: +20955489
 DOB: 01/23/24
 Tattoo: M17

Sitz Resilient 10208
 Connealy Craftsman
 Black Cathy of Conanga 8521

G A R Quantum
 H P C A Quantum S369
 H P C A Sunrise 2172

Entry Wt	Final Wt
746	1207
ADG	ADG Ratio
4.27	115
WDA	WDA Ratio
3.00	94

ANGUS 365		BW	205 Day Wt.	205 Day Ratio	365 Day Wt.	365 Day Ratio	TBT Ratio
ANGUS 365		82	661	100	1166	97	104.00
CED	BW	WW	YW	SC	DOC	HP	
+7	+2.2	+87	+157	+44	+28	+15.5	
MILK	MARB	RE	\$M	\$W	\$B	\$C	
+34	+1.13	+1.29	+82	+84	+202	+344	

Outstanding carcass EPDs on this bull along with lots of performance.

101 SKP True North 2034 [AMF-CAF-D2F-DDF-M1F-NHF-OHF-OSF-RDF]

Stephen Preputin

Black Angus
 AAA#: 21158127
 DOB: 03/20/24
 Tattoo: 2034

S A V Rainfall 6846
 Square B True North 8052
 Elbanna of Conanga 1209

CAR Motive 512
 PGC Motive Girl 9209
 PGC New Design Girl 6027

Entry Wt	Final Wt
717	1132
ADG	ADG Ratio
3.84	104
WDA	WDA Ratio
3.28	103

ANGUS 365		BW	205 Day Wt.	205 Day Ratio	365 Day Wt.	365 Day Ratio	TBT Ratio
ANGUS 365		72	727	104	1188	99	102.33
CED	BW	WW	YW	SC	DOC	HP	
+5	+1.5	+55	+110	+56	+15	+12.9	
MILK	MARB	RE	\$M	\$W	\$B	\$C	
+36	+90	+83	+67	+61	+155	+268	

Exceptional prospect here. A True North prodigy with impressive structure and definition. **RESERVE YOUTH CHAMPION.**

104 CC Enhance Deadwood M16

Casha Corder

Black Angus
 AAA#: +20954134
 DOB: 01/22/24
 Tattoo: M16

Poss Maverick
 Poss Deadwood
 Poss Ellunamere 399

Syngen Enhance
 Martin Enhance 0125
 Ogeechee Sure Fire 7095

Entry Wt	Final Wt
954	1442
ADG	ADG Ratio
4.52	122
WDA	WDA Ratio
3.58	112

ANGUS 365		BW	205 Day Wt.	205 Day Ratio	365 Day Wt.	365 Day Ratio	TBT Ratio
ANGUS 365		72	824	100	1375	115	112.33
CED	BW	WW	YW	SC	DOC	HP	
+5	+2.0	+85	+148	+1.25	+28	+15.4	
MILK	MARB	RE	\$M	\$W	\$B	\$C	
+23	+1.84	+86	+70	+73	+242	+384	

A real Herd Bull here. The highest \$B and \$C in the entire sale offering, to go along near the top of the test ADG and WDA ratios. Top 1% in the breed for \$B, \$G and \$C.



Square B True North 8052 - Sire of Lot 101



Poss Deadwood - Sire of Lot 104

FROM BREED LEADING SIRES

105 CC Ashland Fireball M19

Casha Corder

Black Angus
 AAA#: +20954152
 DOB: 01/21/24
 Tattoo: M19

G A R Sure Fire 6404
GB Fireball 672
 GB Anticipation 432
 G A R Ashland
RAYL Ashland 901P
 GAR Destination 415P

Entry Wt	Final Wt
803	1225
ADG	ADG Ratio
3.91	106
WDA	WDA Ratio
3.03	95

ANGUS 3S		BW	205 Day Wt.	205 Day Ratio	365 Day Wt.	365 Day Ratio	TBT Ratio
		74	704	102	1167	98	102.00
CED	BW	WW	YW	SC	DOC	HP	
+13	+6	+73	+126	+1.26	+15	+12.1	
MILK	MARB	RE	\$M	\$W	\$B	\$C	
+18	+1.76	+74	+52	+62	+211	+326	

Carcass and calving ease specialist.

112 Sunny Rim Fair N Square M5

Sunny Rim Angus

Black Angus
 AAA#: 21087436
 DOB: 02/26/24
 Tattoo: M5

Myers Fair-N-Square M39
Vermilion Fair N Square J280
 Vermilion Ettarre 6137
 LB Biff 852
LB Everelda Entense 035
 WB Everelda Entense 842

Entry Wt	Final Wt
822	1190
ADG	ADG Ratio
3.41	92
WDA	WDA Ratio
3.23	101

ANGUS 3S		BW	205 Day Wt.	205 Day Ratio	365 Day Wt.	365 Day Ratio	TBT Ratio
		93	728	111	1195	100	101.00
CED	BW	WW	YW	SC	DOC	HP	
-1	+3.0	+81	+135	+0.8	+32	+12.7	
MILK	MARB	RE	\$M	\$W	\$B	\$C	
+22	+73	+69	+60	+69	+134	+234	

RESERVE CHAMPION PEN OF 3.

106 CC Evergreen Power M1

Casha Corder

Black Angus
 AAA#: 20947758
 DOB: 02/28/24
 Tattoo: M1

Schafer Full Power 1803
Springvale Full Power 238
 Springvale Bonny 548
 Musgrave Identity 1223-1136
FF Esia Evergreen B160
 FF Esia EVERGREEN W41

Entry Wt	Final Wt
852	1273
ADG	ADG Ratio
3.90	105
WDA	WDA Ratio
3.48	109

ANGUS 3S		BW	205 Day Wt.	205 Day Ratio	365 Day Wt.	365 Day Ratio	TBT Ratio
		82	860	113	1292	108	108.67
CED	BW	WW	YW	SC	DOC	HP	
+4	+1.5	+79	+132	+0.81	+19	+17.6	
MILK	MARB	RE	\$M	\$W	\$B	\$C	
+26	+0.84	+64	+92	+80	+146	+281	

Sire of this bull was a past TBT WDA Champion.

113 Sunny Rim Fair N Square M15

Sunny Rim Angus

Black Angus
 AAA#: 21087435
 DOB: 03/03/24
 Tattoo: M15

Myers Fair-N-Square M39
Vermilion Fair N Square J280
 Vermilion Ettarre 6137
 Vermilion Spur E143
RKP E143-59 028
 RKP Y117-7345 59

Entry Wt	Final Wt
852	1288
ADG	ADG Ratio
4.04	109
WDA	WDA Ratio
3.56	112

ANGUS 3S		BW	205 Day Wt.	205 Day Ratio	365 Day Wt.	365 Day Ratio	TBT Ratio
		94	770	117	1308	109	111.00
CED	BW	WW	YW	SC	DOC	HP	
-1	+4.2	+83	+146	+0.26	+25	+15.5	
MILK	MARB	RE	\$M	\$W	\$B	\$C	
+40	+0.95	+80	+75	+79	+169	+294	

Dam NR 2@114 and YR 2@111. RESERVE CHAMPION PEN OF 3.



GB Fireball 672 - Sire of Lot 105



Vermilion Fair N Square J280 - Sire of Lots 112, 113 & 114

BLACK ANGUS BULLS

114 Sunny Rim Fair N Square M31 Sunny Rim Angus

Black Angus
AAA#: 21087434
DOB: 03/10/24
Tattoo: M31

Myers Fair-N-Square M39
Vermilion Fair N Square J280
Vermilion Ettarre 6137

Bar R Jet Black 5063
LB Anita Linda 015
N S R Miss Linda 421

Entry Wt	Final Wt
796	1178
ADG	ADG Ratio
3.54	96
WDA	WDA Ratio
3.32	104

BW	205 Day Wt.	205 Day Ratio	365 Day Wt.	365 Day Ratio	TBT Ratio	
90	732	112	1217	102	103.33	
CED	BW	WW	YW	SC	DOC	HP
+5	+1.5	+78	+133	+28	+13	+16.5
MILK	MARB	RE	\$M	\$W	\$B	\$C
+29	+.61	+.74	+65	+76	+156	+267

RESERVE CHAMPION PEN OF 3.

116 MSU Rangeland 23223 MSU Angus

Black Angus
AAA#: +21075888
DOB: 04/17/23
Tattoo: 23223

Basin Rainmaker 4404
Ellingson Rangeland
EA Emblyette 7009

Sitz Rainmaker 6169
GDAR Miss Wix 8161
G D A R Miss Wix 474

Entry Wt	Final Wt
1443	1855
ADG	ADG Ratio
3.81	97
WDA	WDA Ratio
2.72	101

BW	205 Day Wt.	205 Day Ratio	365 Day Wt.	365 Day Ratio	TBT Ratio	
89	687	100				
CED	BW	WW	YW	SC	DOC	HP
+10	+.6	+54	+99	+1.91	+25	+21.1
MILK	MARB	RE	\$M	\$W	\$B	\$C
+36	+.53	+.61	+88	+62	+134	+262

115 MSU Rangeland 23209 MSU Angus

Black Angus
AAA#: +21075886
DOB: 04/09/23
Tattoo: 23209

Basin Rainmaker 4404
Ellingson Rangeland
EA Emblyette 7009

Sitz Rainmaker 6169
GDAR Miss Wix 8161
G D A R Miss Wix 474

Entry Wt	Final Wt
1418	1867
ADG	ADG Ratio
4.16	90
WDA	WDA Ratio
2.70	100

BW	205 Day Wt.	205 Day Ratio	365 Day Wt.	365 Day Ratio	TBT Ratio	
94	707	100				
CED	BW	WW	YW	SC	DOC	HP
-2	+5.2	+72	+127	+1.11	+21	+20.2
MILK	MARB	RE	\$M	\$W	\$B	\$C
+30	+.24	+.71	+83	+58	+144	+270

117 MSU Resilient 23243 MSU Angus

Black Angus
AAA#: 21075910
DOB: 04/26/23
Tattoo: 23243

Sitz Stellar 726D
Sitz Resilient 10208
Sitz Miss Burgess 1856

Circle L Gus
Circle L Altune 454G
Circle L Altune Z6

Entry Wt	Final Wt
1316	1807
ADG	ADG Ratio
4.55	115
WDA	WDA Ratio
2.68	100

BW	205 Day Wt.	205 Day Ratio	365 Day Wt.	365 Day Ratio	TBT Ratio	
83	561	88				
CED	BW	WW	YW	SC	DOC	HP
+9	+.3	+67	+122	+.71	+14	+19.0
MILK	MARB	RE	\$M	\$W	\$B	\$C
+31	+.72	+.63	+106	+76	+137	+284



Ellingson Rangeland - Sire of Lots 115 & 116

118 MSU Prodigy 23259 MSU Angus

Black Angus
AAA#: 21082935
DOB: 05/01/23
Tattoo: 23259

Sitz Accomplishment 720F
Sitz Prodigy 12000
Sitz JLS Barbaramere Jet 194

Quaker Hill Rampage 0A36
MSU Ponderosa 20238
V D A R Elluna 8652

Entry Wt	Final Wt
1322	1754
ADG	ADG Ratio
4.00	101
WDA	WDA Ratio
2.62	97

BW	205 Day Wt.	205 Day Ratio	365 Day Wt.	365 Day Ratio	TBT Ratio	
80	628	100				
CED	BW	WW	YW	SC	DOC	HP
+9	+.9	+64	+114	+.84	+15	+16.1
MILK	MARB	RE	\$M	\$W	\$B	\$C
+18	+.55	+1.22	+41	+99	+154	+241

FROM BREED LEADING SIRES

120 MSU Prodigy 23272

MSU
Angus

Black Angus
AAA#: 21075674
DOB: 05/05/23
Tattoo: 23272

Sitz Accomplishment 720F
Sitz Prodigy 12000
Sitz JLS Barbaramere Jet 194
PA Safeguard 021
KW Safespeed Beauty 905
Warner's Speedway Beauty 605

	BW	205 Day Wt.	205 Day Ratio	365 Day Wt.	365 Day Ratio	TBT Ratio
	83	667	105			
CED	BW	WW	YW	SC	DOC	HP
+3	+2.5	+82	+148	+71	+19	+14.8
MILK	MARB	RE	\$M	\$W	\$B	\$C
+29	+0.95	+1.08	+53	+71	+198	+310

125 OCC Dynamic 2466

Olson
Cattle Co

Black Angus
AAA#: 21196678
DOB: 03/13/24
Tattoo: 2466

Deer Valley Growth Fund
BAR Dynamic
B A R Blackcap 7235-B0048
OCC Ultimate Answer 118
Occ Everelda Entense 572
JAF Everelda Entense 22W

	BW	205 Day Wt.	205 Day Ratio	365 Day Wt.	365 Day Ratio	TBT Ratio
	78	857	105	1335	112	109.00
CED	BW	WW	YW	SC	DOC	HP
+11	-.3	+76	+131	+68	+13	+12.4
MILK	MARB	RE	\$M	\$W	\$B	\$C
+28	+0.62	+0.70	+61	+77	+158	+266

Updated genomically enhanced EPDs will be available sale day or found thru the American Angus Association website. **CO-RESERVE WDA CHAMPION.**

121 MSU Resilient 23244

MSU
Angus

Black Angus
AAA#: 21075862
DOB: 04/26/23
Tattoo: 23244

Sitz Stellar 726D
Sitz Resilient 10208
Sitz Miss Burgess 1856
Raven Powerball 53
MSU Reata 20214
S&R Ms Stur-D 191-741

	BW	205 Day Wt.	205 Day Ratio	365 Day Wt.	365 Day Ratio	TBT Ratio
	82	560	88			
CED	BW	WW	YW	SC	DOC	HP
+3	+2.3	+76	+126	+1.74	+11	+12.9
MILK	MARB	RE	\$M	\$W	\$B	\$C
+22	+0.63	+0.32	+69	+70	+133	+242

126 OCC Patriarch 2424

Olson
Cattle Co

Black Angus
AAA#: 21195405
DOB: 02/27/24
Tattoo: 2424

S S Niagara Z29
Tehama Patriarch F028
Tehama Elite Blackbird D826
A A R Ten X 7008 S A
OCC Lucy 624
OCC Lucy 620

	BW	205 Day Wt.	205 Day Ratio	365 Day Wt.	365 Day Ratio	TBT Ratio
	74	920	112	1274	106	102.00
CED	BW	WW	YW	SC	DOC	HP
+11	-.4	+62	+118	+1.40	+20	+16.7
MILK	MARB	RE	\$M	\$W	\$B	\$C
+33	+0.71	+0.54	+72	+66	+146	+261

Updated genomically enhanced EPDs will be available sale day or found thru the American Angus Association website.

124 MSU Source 23213

MSU
Angus

Black Angus
AAA#: +21152735
DOB: 04/11/23
Tattoo: 23213

S A V Resource 1441
Mytty Source
Mytty Blackcap 104U
Sitz Rainmaker 6169
Sitz Miss Burgess 734X
Sitz Miss Burgess 1591

	BW	205 Day Wt.	205 Day Ratio	365 Day Wt.	365 Day Ratio	TBT Ratio
	86	659	100			
CED	BW	WW	YW	SC	DOC	HP
+7	+3	+56	+95	+2.04	+7	+7.4
MILK	MARB	RE	\$M	\$W	\$B	\$C
+18	+0.35	+0.81	+37	+49	+111	+181



Tehama Patriarch F028 - Sire of Lot 126

BLACK ANGUS BULLS

127 OCC Dynamic 2488

Olson
Cattle Co

Black Angus

AAA#: 21197482

DOB: 03/24/24

Tattoo: 2488

Deer Valley Growth Fund
BAR Dynamic
B A R Blackcap 7235-B0048

Tehama Patriarch F028

OCC Erica 269

OCC Erica 084

Entry Wt	Final Wt
885	1309
ADG	ADG Ratio
3.93	106
WDA	WDA Ratio
3.84	120

	BW	205 Day Wt.	205 Day Ratio	365 Day Wt.	365 Day Ratio	TBT Ratio
	70	950	113	1454	122	113.67
CED	BW	WW	YW	SC	DOC	HP
MILK	MARB	RE	\$M	\$W	\$B	\$C

Updated genomically enhanced EPDs will be available sale day or found thru the American Angus Association website. **WDA CHAMPION.**



BAR Dynamic - Sire of Lots 125 & 127

128 OCC Step Up 2460

Olson
Cattle Co

Black Angus

AAA#: 21196898

DOB: 03/11/24

Tattoo: 2460

G A R Big Step K715

EZAR Step Up 9178

Basin Lucy 4261

V A R Discovery 2240

JVC Miss Wix 574

ICC Reece's Miss Wix 057

Entry Wt	Final Wt
903	1288
ADG	ADG Ratio
3.56	96
WDA	WDA Ratio
3.64	114

	BW	205 Day Wt.	205 Day Ratio	365 Day Wt.	365 Day Ratio	TBT Ratio
	82	899	109	1313	110	105.00
CED	BW	WW	YW	SC	DOC	HP
+4	+2.0	+66	+119	+1.82	+24	+13.6
MILK	MARB	RE	\$M	\$W	\$B	\$C
+24	+0.99	+65	+71	+59	+170	+292

Updated genomically enhanced EPDs will be available sale day or found thru the American Angus Association website.



EZAR Step Up 9178 - Sire of Lot 128

130 Linhart Growth Fund 4636 M L

Mardi
Linhart

Black Angus

AAA#: 21148751

DOB: 02/10/24

Tattoo: 4636

Basin Payweight 1682

Deer Valley Growth Fund

Deer Valley Rita 36113

Connealy Black Granite

M L Zara 6356

M L Zara 3536

Entry Wt	Final Wt
888	1366
ADG	ADG Ratio
4.43	120
WDA	WDA Ratio
3.56	112

	BW	205 Day Wt.	205 Day Ratio	365 Day Wt.	365 Day Ratio	TBT Ratio
	79	829	106	1312	110	112.00
CED	BW	WW	YW	SC	DOC	HP
+5	+2.4	+87	+149	+4.9	+10	+12.0
MILK	MARB	RE	\$M	\$W	\$B	\$C
+28	+0.40	+89	+65	+82	+163	+276

JACKPOT CHAMPION.



Deer Valley Growth Fund - Sire of Lot 130

FROM BREED LEADING SIRES

132 **GK Harness M155** [M1F-OHF] **Skogen GK Angus**

Black Angus Mill Brae Identified 4031
 AAA#: 21092420 Baldridge Harness
 DOB: 02/08/24 Baldridge Isabel D753
 Tattoo: M155 S A V West Plains 2161
 GK West Plains Lass E025
 GK Priority Lady C851

	Entry Wt	Final Wt
	758	1228
	ADG	ADG Ratio
	4.35	118
	WDA	WDA Ratio
	3.18	100

	BW	205 Day Wt.	205 Day Ratio	365 Day Wt.	365 Day Ratio	TBT Ratio
	84	683	94	1231	103	105.00
CED	BW	WW	YW	SC	DOC	HP
-3	+3.3	+77	+145	+59	+24	+7.5
MILK	MARB	RE	\$M	\$W	\$B	\$C
+24	+7.3	+59	+38	+60	+180	+271

135 **GK Southern Charm M588** [DDF-M1F-OHF] **Skogen GK Angus**

Black Angus BUBS Southern Charm AA31
 AAA#: 21092421 DBL Southern Charm 104
 DOB: 03/01/24 DBL Elba 702
 Tattoo: M588 GK Black Bold D323
 GK Bold Lady H583
 GK Never Late 164C

	Entry Wt	Final Wt
	810	1313
	ADG	ADG Ratio
	4.66	126
	WDA	WDA Ratio
	3.61	113

	BW	205 Day Wt.	205 Day Ratio	365 Day Wt.	365 Day Ratio	TBT Ratio
	96	769	105	1454	122	117.67
CED	BW	WW	YW	SC	DOC	HP
-5	+5.1	+77	+144	+10	+24	+9.9
MILK	MARB	RE	\$M	\$W	\$B	\$C
+20	+5.8	+53	+30	+47	+164	+243

TBT CHAMPION BULL & 3RD PLACE ADG.

133 **GK Jorge M044** [DDF-OHF] **Skogen GK Angus**

Black Angus G A R Wichita
 AAA#: 21092419 Baldridge Jorge J321
 DOB: 01/26/24 Baldridge Blackbird A030
 Tattoo: M044 KLA Confidence Plus 965
 GK Lady of Confidence K825
 GK Full Bloom Daughter E836

	Entry Wt	Final Wt
	796	1151
	ADG	ADG Ratio
	3.29	89
	WDA	WDA Ratio
	2.88	90

	BW	205 Day Wt.	205 Day Ratio	365 Day Wt.	365 Day Ratio	TBT Ratio
	75	739	101	1197	100	96.67
CED	BW	WW	YW	SC	DOC	HP
+8	+1.6	+69	+119	-16	+20	+5.5
MILK	MARB	RE	\$M	\$W	\$B	\$C
+28	+6.3	+80	+72	+74	+129	+239

136 **GK Southern Charm M261** [DDF-OHF] **Skogen GK Angus**

Black Angus BUBS Southern Charm AA31
 AAA#: 21092422 DBL Southern Charm 104
 DOB: 02/18/24 DBL Elba 702
 Tattoo: M261 MW Renown Lad 147
 GK Lady of Renown H300
 GK Lady of Eliminator D658

	Entry Wt	Final Wt
	758	1248
	ADG	ADG Ratio
	4.54	123
	WDA	WDA Ratio
	3.32	104

	BW	205 Day Wt.	205 Day Ratio	365 Day Wt.	365 Day Ratio	TBT Ratio
	87	695	95	1318	110	109.33
CED	BW	WW	YW	SC	DOC	HP
+3	+2.7	+64	+111	+05	+29	+11.9
MILK	MARB	RE	\$M	\$W	\$B	\$C
+19	+7.6	+1.03	+43	+45	+174	+269

134 **GK Jalapeno M317** [OHP] **Skogen GK Angus**

Black Angus Baldridge Alternative E125
 AAA#: 21092423 Baldridge Jalapeno
 DOB: 02/20/24 H P C A Momentum 18
 Tattoo: M317 S A V Massey 2197
 GK Miss Massey F715
 GK Net Worth Lady B109

	Entry Wt	Final Wt
	752	1261
	ADG	ADG Ratio
	4.71	127
	WDA	WDA Ratio
	3.37	106

	BW	205 Day Wt.	205 Day Ratio	365 Day Wt.	365 Day Ratio	TBT Ratio
	81	669	92	1214	101	106.67
CED	BW	WW	YW	SC	DOC	HP
+4	+7	+64	+112	+49	+14	+8.5
MILK	MARB	RE	\$M	\$W	\$B	\$C
+23	+6.1	+69	+37	+57	+150	+232

RESERVE CHAMPION ADG.



DBL Southern Charm 104 - Sire of Lots 135 & 136

BLACK ANGUS BULLS

137 GK Jigsaw M196

Skogen
GK Angus

Black Angus
AAA#: 21092424
DOB: 02/14/24
Tattoo: M196

S A V Rainfall 6846
Baldrige Jigsaw J523
Baldrige Isabel G336

S A V Bridgestone 1119
GK Frontier Bridgestone 190
GK New Frontier Lady U312

Entry Wt	Final Wt
899	1350
ADG	ADG Ratio
4.18	113
WDA	WDA Ratio
3.55	111



BW	205 Day Wt.	205 Day Ratio	365 Day Wt.	365 Day Ratio	TBT Ratio	
86	818	112	1374	115	113.33	
CED	BW	WW	YW	SC	DOC	HP
-4	+4.0	+83	+155	+1.19	+19	+10.0
MILK	MARB	RE	\$M	\$W	\$B	\$C
+21	+.94	+.63	+48	+59	+182	+284

RESERVE CHAMPION JACKPOT.

139 RKP 224-222 414

RK
Perry

Black Angus
AAA#: 20999019
DOB: 03/03/24
Tattoo: 414

Sterling Pacific 904
Granger Pacman 224
Granger Eileen 937

RKP F325-65 013
RKP 013-84 222
RKP N013-707 84



BW	205 Day Wt.	205 Day Ratio	365 Day Wt.	365 Day Ratio	TBT Ratio	
82	827	108	1279	107	104.00	
CED	BW	WW	YW	SC	DOC	HP
+7	+3.3	+75	+134	+1.63	+26	+13.4
MILK	MARB	RE	\$M	\$W	\$B	\$C
+21	+.71	+.70	+68	+58	+157	+272

138 RKP WM K061-14 M6

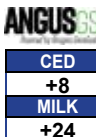
RK
Perry

Black Angus
AAA#: 21158202
DOB: 02/28/24
Tattoo: M6

Vermilion Bomber G017
Vermilion Riverside
Vermilion Eulima 0239

Poss Rawhide
RKP 9513-755 14
Broken Arrow Lass 755B

Entry Wt	Final Wt
803	1299
ADG	ADG Ratio
4.59	124
WDA	WDA Ratio
3.55	111



BW	205 Day Wt.	205 Day Ratio	365 Day Wt.	365 Day Ratio	TBT Ratio	
83	771	118	1329	111	116.67	
CED	BW	WW	YW	SC	DOC	HP
+8	+.2	+96	+161	+.46	+13	+7.1
MILK	MARB	RE	\$M	\$W	\$B	\$C
+24	+.44	+.74	+54	+92	+153	+252

Calving ease Herd Bull here out of the popular Vermilion Riverside.

140 RKP J611-014 M20

RK
Perry

Black Angus
AAA#: 21081013
DOB: 03/05/24
Tattoo: M20

Deer Valley Growth Fund
Vermilion Growth Fund J611
Vermilion Evergreen 3133

Vermilion Spur E143
RKP E143-50 014
RKP 078-7345 50



BW	205 Day Wt.	205 Day Ratio	365 Day Wt.	365 Day Ratio	TBT Ratio	
92	708	108	1343	112	113.00	
CED	BW	WW	YW	SC	DOC	HP
+5	+4.2	+97	+171	+1.90	+23	+15.4
MILK	MARB	RE	\$M	\$W	\$B	\$C
+30	+.41	+.67	+73	+81	+155	+274

Pathfinder Dam with a NR of 3@112. CO-RESERVE WDA CHAMPION.



Vermilion Riverside - Sire of Lots 138 & 147

141 RKP 1149-205 417

RK
Perry

Black Angus
AAA#: 20999012
DOB: 03/06/24
Tattoo: 417

S Architect 9501
S Armstrong
S Queen Essa 7149

Baldrige Flagstone F411
RKP F411-Y100 205
FF Eisa Evergreen Y100



BW	205 Day Wt.	205 Day Ratio	365 Day Wt.	365 Day Ratio	TBT Ratio	
95	917	120	1397	117	117.00	
CED	BW	WW	YW	SC	DOC	HP
-3	+4.2	+97	+156	+1.35	+25	+19.3
MILK	MARB	RE	\$M	\$W	\$B	\$C
+33	+.70	+.80	+99	+91	+172	+322

This high-performance Herd Bull whose dam is a first calf heifer that bred back early and is a flush mate to high selling bulls from the 2023 TBT Sale. 3RD PLACE WDA.

FROM BREED LEADING SIRES

144 RKP 224-253 419

RK Perry

Black Angus
AAA#: 20999017
DOB: 03/07/24
Tattoo: 419

Sterling Pacific 904
Granger Pacman 224
Granger Eileen 937
Vermilion Abundant F325
RKP F325-47 253
RKP 0413-2480 47

Entry Wt	Final Wt
790	1150
ADG	ADG Ratio
3.33	90
WDA	WDA Ratio
3.21	101



	BW	205 Day Wt.	205 Day Ratio	365 Day Wt.	365 Day Ratio	TBT Ratio
	84	823	108	1238	103	100.33
CED	BW	WW	YW	SC	DOC	HP
+5	+2.2	+73	+132	+1.80	+21	+7.4
MILK	MARB	RE	\$M	\$W	\$B	\$C
+19	+1.05	+88	+36	+54	+189	+281

148 RKP J611-12 M34

RK Perry

Black Angus
AAA#: 21087433
DOB: 03/19/24
Tattoo: M34

Deer Valley Growth Fund
Vermilion Growth Fund J611
Vermilion Evergreen 3133
Sterling Pacific 904
RKP 904-F81 12
FF Winona F81

Entry Wt	Final Wt
718	1100
ADG	ADG Ratio
3.54	96
WDA	WDA Ratio
3.18	100



	BW	205 Day Wt.	205 Day Ratio	365 Day Wt.	365 Day Ratio	TBT Ratio
	87	690	105	1180	99	100.00
CED	BW	WW	YW	SC	DOC	HP
+7	+3.5	+99	+170	+1.01	+29	+17.9
MILK	MARB	RE	\$M	\$W	\$B	\$C
+27	+3.6	+35	+104	+88	+148	+296

147 RKP WM K061-13 M28

RK Perry

Black Angus
AAA#: 21158203
DOB: 03/08/24
Tattoo: M28

Vermilion Bomber G017
Vermilion Riverside
Vermilion Eulima 0239
Poss Rawhide
RKP 9513-7055 13
RKP 561X-8456 7055

Entry Wt	Final Wt
839	1301
ADG	ADG Ratio
4.28	116
WDA	WDA Ratio
3.64	114



	BW	205 Day Wt.	205 Day Ratio	365 Day Wt.	365 Day Ratio	TBT Ratio
	90	770	117	1364	114	115.00
CED	BW	WW	YW	SC	DOC	HP
-1	+4.3	+90	+152	+1.82	+28	+8.5
MILK	MARB	RE	\$M	\$W	\$B	\$C
+26	+1.15	+98	+47	+73	+139	+227

153 RKP J611-601 M26

RK Perry

Black Angus
AAA#: 21087431
DOB: 03/08/24
Tattoo: M26

Deer Valley Growth Fund
Vermilion Growth Fund J611
Vermilion Evergreen 3133
Koupals B&B Extra 0011
RKP 0011-325 601
Merle of Braun Creek 325

Entry Wt	Final Wt
749	1200
ADG	ADG Ratio
4.18	113
WDA	WDA Ratio
3.36	105



	BW	205 Day Wt.	205 Day Ratio	365 Day Wt.	365 Day Ratio	TBT Ratio
	96	658	100	1212	101	104.67
CED	BW	WW	YW	SC	DOC	HP
+3	+3.2	+85	+145	+1.13	+27	+11.3
MILK	MARB	RE	\$M	\$W	\$B	\$C
+28	+4.2	+23	+68	+75	+123	+228



S Armstrong - Sire of Lot 141

154 RKP J611-71 M17

RK Perry

Black Angus
AAA#: 21087432
DOB: 03/04/24
Tattoo: M17

Deer Valley Growth Fund
Vermilion Growth Fund J611
Vermilion Evergreen 3133
Boyd Signature 1014
RKP 1014-8456 71
Vermilion Lass 8456

Entry Wt	Final Wt
795	1215
ADG	ADG Ratio
3.89	105
WDA	WDA Ratio
3.37	106



	BW	205 Day Wt.	205 Day Ratio	365 Day Wt.	365 Day Ratio	TBT Ratio
	91	614	94	1214	101	100.00
CED	BW	WW	YW	SC	DOC	HP
+7	+1.1	+80	+135	+7.8	+19	+4.9
MILK	MARB	RE	\$M	\$W	\$B	\$C
+39	+3.5	+76	+57	+90	+143	+242

American Angus Association \$Value Indexes



Dollar value indexes, or **\$Values**, are a tool used to select for several traits at once based on a specific breeding objective. An economic index approach takes into account genetic and economic values as well as the relationships between traits to select for profit.

ANGUS
THE BUSINESS BREED

Maternal Weaned Calf Value (\$M), an index expressed in dollars per head, predicts profitability differences in progeny due to genetics from conception to weaning. \$M is built off of a self-replacing herd model where commercial cattlemen replace 25% of their breeding females in the first generation and 20% in subsequent generations. Remaining cull females and all male progeny are sold as feeder calves. Increased selection pressure on \$M aims to decrease overall mature cow size and improve foot structure and fertility while maintaining weaning weights consistent with today's production.

Weaned Calf Value (\$W), an index expressed in dollars per head, provides the expected difference in future progeny preweaning performance from birth to weaning. \$W assumes that producers retain 20% of their female progeny for replacements and sell the rest of their cull female and male progeny as feeder calves. Over time, increased selection pressure on \$W will increase weaning and maternal milk traits while also continuing to increase mature cow size.

Feedlot Value (\$F), an index expressed in dollars per head, is the expected average difference in future progeny performance for post-weaning merit compared to progeny of other sires. The underlying objective assumes commercial producers will retain ownership of cattle through the feedlot phase and sell fed cattle on a carcass weight basis with no considerations of premiums or discounts for quality and yield grade.

Grid Value (\$G), an index expressed in dollars per carcass, is the expected average difference in future progeny performance for carcass grid merit, including quality and yield grade attributes, compared to progeny of other sires.

Beef Value (\$B), an index expressed in dollars per carcass, facilitates simultaneous multi-trait genetic selection for feedlot and carcass merit. \$B represents the expected average differences in the progeny postweaning performance and carcass value compared to progeny of other sires. This index assumes commercial producers wean all male and female progeny, retain ownership of these animals through the feedlot phase and market these animals on a quality-based carcass grid.

Combined Value (\$C), an index expressed in dollars per head, includes all traits that make up both \$M and \$B with the objective that commercial producers will replace 20% of their breeding females per year with replacement heifers retained within their own herd. The remaining cull heifer and steer progeny are then assumed to be sent to the feedlot where the producers retain ownership of those cattle and eventually sell them on a quality-based carcass merit grid.

EPDS DIRECTLY INCORPORATED INTO EACH \$VALUE						
TRAIT	MATERNAL		TERMINAL			
	\$M	\$W	\$F	\$G	\$B	
CED	✓					✓
BW		✓				
WW	✓	✓				✓
YW			✓		✓	✓
CEM	✓					✓
Milk	✓	✓				✓
MW	✓	✓				✓
DOC	✓					✓
HP	✓					✓
Claw Angle	✓					✓
DMI			✓		✓	✓
CW			✓	✓	✓	✓
RE				✓	✓	✓
Marb				✓	✓	✓
Fat				✓	✓	✓

Expected Progeny Difference (EPD), is the prediction of how future progeny of each animal are expected to perform relative to the progeny of other animals listed in the database. EPDs are expressed in units of measure for the trait, plus or minus. Interim EPDs may appear on young animals when their performance has yet to be incorporated into the American Angus Association National Cattle Evaluation (NCE) procedures. This EPD will be preceded by an "I", and may or may not include the animal's own performance record for a particular trait, depending on its availability, appropriate contemporary grouping, or data edits needed for NCE.

Accuracy (ACC), is the reliability that can be placed on the EPD. Accuracy will range from 0 to 1 with an accuracy closer to 1.0 indicating higher reliability. Accuracy is impacted by the amount of information that is included in the analysis including individual genotype and performance records as well as number of progeny and ancestral records.

PRODUCTION

Calving Ease Direct (CED), expressed as a difference in percentage of unassisted births, with a higher value indicating greater calving ease in first-calf heifers. It predicts the average difference in ease with which a sire's calves will be born when he is bred to first-calf heifers.

Birth Weight (BW), expressed in pounds, is a predictor of a sire's ability to transmit birth weight to his progeny compared to that of other sires.

Weaning Weight (WW), expressed in pounds, is a predictor of a sire's ability to transmit weaning growth to his progeny compared to that of other sires.

Yearling Weight (YW), expressed in pounds, is a predictor of a sire's ability to transmit yearling growth to his progeny compared to that of other sires.

Residual Average Daily Gain (RADG), feed efficiency expressed in pounds per day, is a predictor of a sire's genetic ability for post-weaning gain in future progeny compared to that of other sires, given a constant amount of feed consumed.

Dry Matter Intake (DMI), expressed in pounds per day, is a predictor of difference in transmitting ability for feed intake during the post-weaning phase, compared to that of other sires.

Yearling Height (YH), expressed in inches, is a predictor of a sire's ability to transmit yearling height compared to that of other sires.

Scrotal Circumference (SC), expressed in centimeters, is a predictor of the difference in transmitting scrotal size compared to that of other sires.

MANAGEMENT

Claw Set (Claw), expressed in units of claw-set score, a lower EPD is more favorable, indicating a sire will produce progeny with more symmetrical, even and appropriately spaced toes compared to another sire.

Foot Angle (Angle), expressed in units of foot-angle score, a lower EPD is more favorable, indicating a sire will produce progeny with an angle closer to 45 degrees at the pastern and appropriate toe length and heel depth compared to another sire.

Docility (DOC), expressed as a difference in yearling cattle temperament, with a higher value indicating more favorable docility in a sire's offspring compared to another sire.

Pulmonary Arterial Pressure EPD (PAP), expressed in millimeters of Mercury (mmHg), with a lower EPD being more favorable indicating a sire should produce progeny with a lower PAP score to decrease the risk of progeny contracting high altitude disease most commonly experienced at 5,500 ft or greater in elevation.

Hair Shed EPD (HS), expressed in units of hair shed score, with a lower EPD being more favorable. This indicates a sire should produce progeny who shed their winter coat earlier in the spring and has improved environmental adaptability in heat stressed areas and grazing endophyte-infected (hot) fescue.

MATERNAL

Heifer Pregnancy (HP), is a selection tool to increase the probability or chance of a sire's daughters becoming pregnant as first-calf heifers during a normal breeding season. A higher EPD is the more favorable direction, and the EPD is reported in percentage units.

Calving Ease Maternal (CEM), expressed as a difference in percentage of unassisted births, with a higher value indicating greater calving ease in first-calf daughters. It predicts the average ease with which a sire's daughters will calve as first-calf heifers when compared to daughters of other sires.

Maternal Milk (Milk), expressed in pounds of calf weaned, is a predictor of a sire's genetic merit for milk and mothering ability in his daughters. In other words, it is the part of the calf's weaning weight attributes to milk and mothering ability.

Mature Weight (MW), expressed in pounds, is a predictor of the difference in mature weight of daughters of a sire compared to the daughters of other sires.

Mature Height (MH), expressed in inches, is a predictor of the difference in mature height of a sire's daughters compared to daughters of other sires.

CARCASS

Carcass Weight (CW), expressed in pounds, is a predictor of the differences in hot carcass weight of a sire's progeny compared to progeny of other sires.

Marbling (Marb), expressed as a fraction of the difference in USDA marbling score of a sire's progeny compared to progeny of other sires.

Ribeye Area (RE), expressed in square inches, is a predictor of the difference in ribeye area of a sire's progeny compared to progeny of other sires.

Fat Thickness EPD (Fat), expressed in inches, is a predictor of the differences in external fat thickness at the 12th rib (as measured between the 12th and 13th ribs) of a sire's progeny compared to progeny of other sires.

\$VALUE INDEXES

\$Value Indexes, expressed in dollars per head, are multi-trait selection indexes where a higher value suggests more profit. The \$Value is an estimate of how future progeny of each sire are expected to perform, on average, compared to progeny of other sires if sires were randomly mated to cows and if calves were exposed to the same environment.

Maternal Weaned Calf Value (SM), expressed in dollars per head, predicts profitability differences in progeny due to genetics from conception to weaning by decreasing mature cow size and improving docility, foot structure and fertility while maintaining weaning weights consistent with today's production.

Weaned Calf Value (SW), expressed in dollars per head, provides the expected difference in future progeny pre-weaning performance from birth to weaning.

Energy Value (SEN), expressed in dollar savings per cow per year with a larger value being more favorable. It assesses differences in cow energy requirements, due to maternal milk and mature cow size.

Feedlot Value (SF), expressed in dollars per head, is the expected average difference in future progeny performance for post-weaning feedlot merit (growth and feed efficiency) compared to progeny of other sires assuming producers retain ownership of cattle through the feedlot phase and sell on a carcass-weight basis.

Grid Value (SG), expressed in dollars per carcass, is the expected average difference in future progeny performance for carcass grid merit, including quality and yield grade attributes, compared to progeny of other sires.

Beef Value (SB), expressed in dollars per carcass, represents the expected average differences in the progeny post-weaning performance and carcass value compared to progeny of other sires. This index assumes commercial producers wean all male and female progeny, retain ownership of these animals through the feedlot and sell on a carcass merit grid.

Combined Value (SC), expressed in dollars per head, which includes all traits that make up both Maternal Weaned Calf Value (\$M) and Beef Value (\$B) with the objective that commercial producers will replace 20% of their breeding females per year with replacement heifers retained within their own herd. The remaining cull heifer and steer progeny are then assumed to be sent to the feedlot where the producers retain ownership of those cattle and sell them on a quality-based carcass merit grid.



2025 SALE SCHEDULE

EARLY SUMMER SPECIAL
JUNE 26

Consignment Deadline June 6

SUMMERTIME CLASSIC
JULY 21-23

Consignment Deadline July 4

EARLY FALL PREVIEW
AUGUST 18-19

Consignment Deadline August 1

FALL PREMIER SPECIAL
SEPTEMBER 15

Consignment Deadline August 29

Now featuring a timed weekly Online Auction

*Striving to connect Buyers & Sellers by leading the way with
Innovative Technology that produces results*

Northern Livestock Video Auction

Bringing National Livestock Buyers Right To Your Pasture

1-866-616-5035

P.O. Box 31533 • Billings, MT 59107

NLVA COORDINATORS

Joe Goggins (406) 861-5664

Ty Thompson (406) 698-4783

Bill Cook (406) 670-0689

"We feature the best of the Northern feeder cattle from the nation's outstanding North. Be part of it."



PERFORMANCE IS SERVED.
CRYSTALYX.COM

B.T.I. DISTRIBUTING
1-406-873-4433
btifeeds@qwestoffice.net

Blueprint[®] ΩMEGA

BLUEPRINTANIMALNUTRITION.COM

TARGETED NUTRITION
Blueprint

Targeted Nutrition. Without Excess. For Peak Performance.

Blueprint[®] is the next step forward in high-performing animal nutrition.

CRYSTALYX[®] Blueprint[®] products contain 100% organic trace minerals made to unlock the health and potential of your cattle, enabling them to perform at their very best.



Immune Health



Supports Fertility



Genetic Potential

What can Blueprint do for you?

+2.7%

increase in conception rate

MORE CALVES

+24lbs.

increased weaning weight

HEAVIER CALVES

-2.1%

drop in pre-weaning mortality rate

HEALTHIER CALVES

If you are looking for better results in your herd and more money in your pocket, turn to Blueprint[®]. **More calves. Heavier calves. Healthier calves.**

Find the CRYSTALYX[®] Blueprint[®] line-up at blueprintanimalnutrition.com



**TREASURE
BULL TEST**

PO Box 1, Power, MT 59468

FIRST CLASS MAIL
AUTO
U.S. POSTAGE
PAID
LEWISTOWN, MT
Permit No. 181

**OFFERING
PERFORMANCE TESTED:**

**110 YEARLING AND
TWO-YEAR-OLD BULLS**



Ryan & Karnell Perry
406/788-9869 406/390-5473

